

■PRACTICAL TIPS

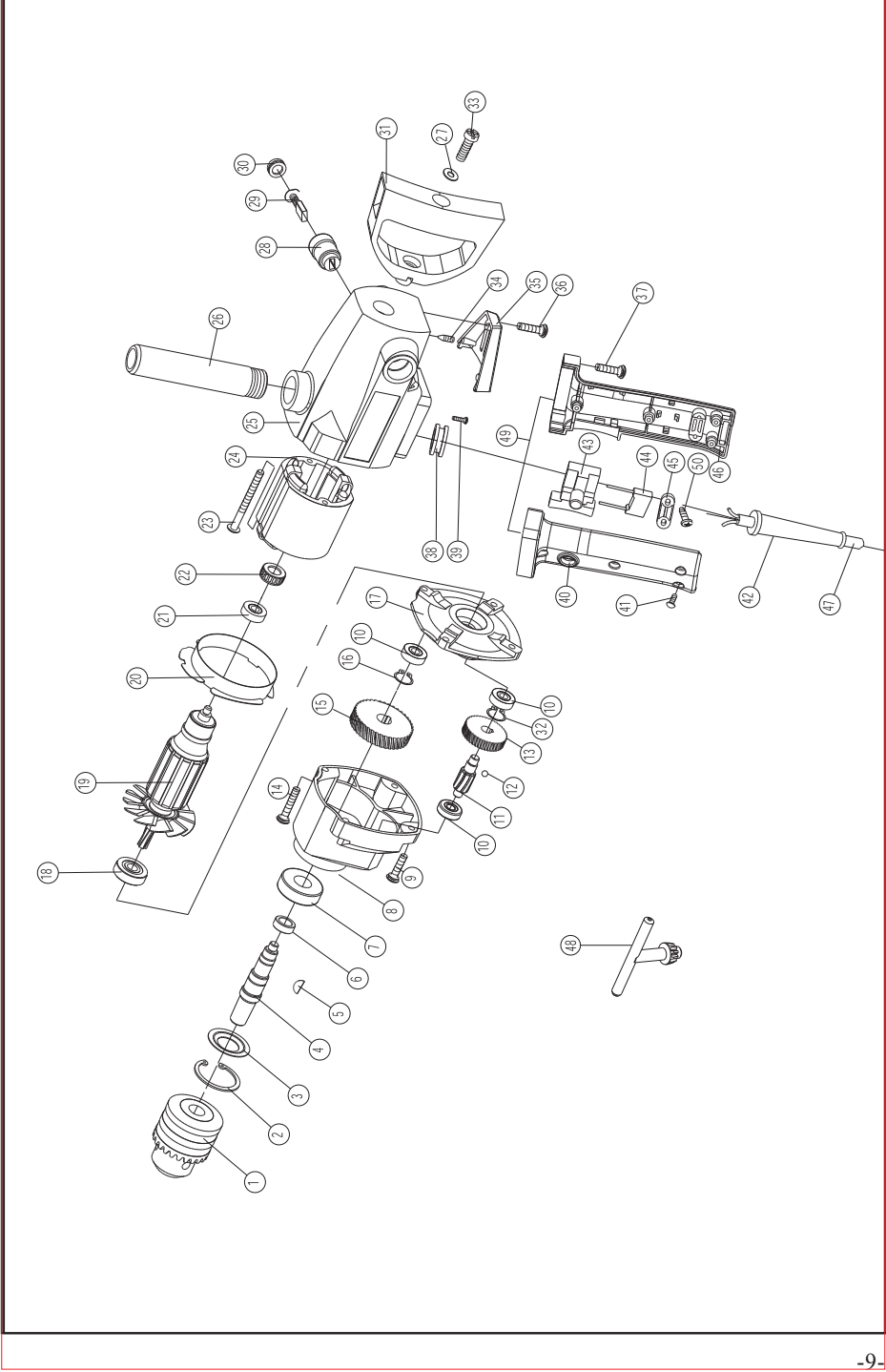
Do not drill into hidden electrical lines or gas and water pipes. Check the area to be worked with a metal detector before starting.
Use only correctly sharpened drill bits, which are suitable for the material being drilled.
For precision working with metal and wood, place the machine in a drill stand.
If the drilling tool become jammed or gets caught, the slip clutch releases.
Remove the load from the machine immediately by pulling back the drilling tool.
The tool belongs to I category tools, the using current source socket must have reliable earth, the operator must wear insulated gloves or stand on the insulated pad if can't confirm the earth is reliable or not.
Please use the tri-cartridge twofold insulation electric cable which size is the same as the size of the tool when using the extended cable, and please confirm that the yellow & green double color wire is connected with the protective earth equipment.
Please use an automatic electric interrupter (30mA) to protect operator's safety if it appears short circuit condition while working in the moist and narrow space with the tool although there's earth protection.

■MAINTENANCE AND CARE

· Unplug the tool from the socket before performing any works on the tool!
· Tool requires no special maintenance, but after some time you must control the parts that are submitted to wear-and-tear under normal operating conditions. This includes the control and replacement of carbon brushes and grease in reducing gear housing. Take the tool to an authorized service centre.
· Keep the tool and supply cord clean. Keep ventilation slots clean and open. Wipe the surface of the tool with a soft cloth!
· It is not allowed to use household cleaning agents that contain petrol, trichloroethylene, ammonia and chlorides. These substances corrode and damage plastic parts of the tool.
· Excessive sparking generally indicates the presence of dirt in the motor or abnormal wear on the carbons.
· In case of electric or mechanical failure, send the tool to a KEN authorized service centre for repair.

■SERVICING AND REPAIRS

If servicing is required, contact one of our listed service centers. It is not allowed and dangerous to perform any individual work on the tool.
◆ Have the tool repaired by authorized persons.
◆ Any repairs of the tool in unauthorized service centers is performed at own responsibility.
◆ The owner of the tool is responsible for all works on the tool that were not performed in authorized service center, and therefore he loses the claim for guarantee.



-9-

PARTS LIST of the Mod.6816NB ELECTRIC DRILL STIRRER							
No.	Code	Name	Remark	No.	Code	Name	Remark
1	628008	Drill Chunk		26	627018	Subsidiary handle	
2	251009	Retainer	40	28	432005	Brush holder	
3	116004	Bearing cap		29	431009B	Carbon brush	
4	133038	Spindle		30	433006	Brush cap	
5	276002	Key	4×13	31	165007A	Back handle	
6	143020	Bearing sleeve		32	252001	Retainer	8
7	211054	Ball bearing	6203-2RZ	33	231050	Screw	M8×20
8	162028A	Gear Box		34	235001	Screw	M5×8
9	231033	Screw	M5×35	35	168002A	Back cap	
10	211019	Ball bearing	608-2Z	36	231010	Screw	M5×25
11	136045	Bearing		38	338003	Rubber sleeve	
12	271002	Steel Ball	Φ4	39	231017	Screw	M4×10
13	136047	First big gear		40	314067	Left handle	
14	231086	Screw	M5×40	41	221011	Screw	ST4×16
15	136046	Second big gear		42	332006	Cord sleeve	
16	252005	Retainer	14	43	445018	Swift	
17	163005A	Medal bearing		44	443007	Capacitor	
18	211040	Ball bearing	6200-2RS	45	318001	Cord clamp	
19	442008	Rotor		46	314066	Right handle	
20	110007	Retainer		47	412004	Power cord	
21	211007	Ball retainer	607-2RS	48	628009	Wrench	
22	331001	Bearing sleeve		49	712023	Handle assembled	
23	231148	Screw assembled	M5×65	50	222001	Screw	ST4×14
24	441010	Stator					
25	164001A	Motor housing					

-8-

Original instruction

GENERAL SAFETY INSTRUCTIONS

⚠ WARNING! Read all instructions. Failure to follow all instructions listed below may result in electric shock, fire and/or serious injury. The term "power tool" in all of the warnings listed below refers to your mains operated power tool.

SAVE THESE INSTRUCTIONS.

1) WORK AREA

a) Keep work area clean and well lit. Cluttered and dark areas invite accidents.
b) Do not operate power tools in explosive atmospheres, such as in the presence of flammable liquids, gases or dust. Power tools create sparks which may ignite the dust or fumes.
c) Keep children and bystanders away while operating a power tool. Distractions can cause you to lose control.

2) ELECTRICAL SAFETY

a) Power tool plugs must match the outlet. Never modify the plugs in any way. Do not use any adapter plugs with earthed grounded power tools. Unmodified plugs and matching outlets will reduce risk of electric shock.
b) Avoid body contact with earthed or grounded surfaces such as pipes, radiators, ranges and refrigerators. There is an increased risk of electric shock if your body is earthed or grounded.
c) Do not expose power tools to rain or wet conditions. Water entering a power tool will increase the risk of electric shock.
Do not abuse the cord. Never use the cord for carrying, pulling or unplugging the power tool.
d) Keep cord away from heat, oil, sharp edges or moving parts. Damaged or entangled cords increase the risk of electric shock.
e) When operating a power tool outdoors, use an extension cord suitable for outdoor use. Use of a cord suitable for outdoor use reduces the risk of electric shock.
f) If operating a power tool in a damp location is unavoidable, use a residual current device (RCD) protected supply. Use of an RCD reduces the risk of electric shock.

3) PERSONAL SAFETY

a) Stay alert, watch what you are doing and use common sense when operating a power tool. Do not use a power tool while you are tired or under the influence of drugs, alcohol or medication. A moment of inattention while operating power tools may result in serious personal injury.
b) Use personal protective equipment. Always wear eye protection. protective equipment such as dust mask, non-skid safety shoes, hard hat, or hearing protection used for appropriate conditions will reduce personal injuries.
c) Prevent unintentional starting. Ensure the switch is in the off-position before connecting to power source and/or battery pack, picking up or carrying the tool. Carrying power tools with your finger on the switch or energising power tools that have the switch on invites accidents.
d) Remove any adjusting key or wrench before turning the power tool on. A wrench or a key left attached to a rotating part of the power tool may result in personal injury.
e) Do not overreach. Keep proper footing and balance at all times. This enables better control of the power tool in unexpected situations.
f) Dress properly. Do not wear loose clothing or jewelry. Keep your hair, clothing and gloves away from moving parts. Loose clothes, jewelry or long hair can be caught in moving parts.
g) If devices are provided for the connection of dust extraction and collection facilities, ensure these are connected and properly used. Use of these devices can reduce dust related hazards.

-1-

4) POWER TOOL USE AND CARE

a) Do not force the power tool. Use the correct power tool for your application. The correct power tool will do the job better and safer at the rate for which it was designed.
b) Do not use the power tool if the switch does not turn it on and off. Any power tool that cannot be controlled with the switch is dangerous and must be repaired.
c) Disconnect the plug from the power source and/or the battery pack from the power tool before making any adjustments, changing accessories, or storing power tools. Such preventive safety measures reduce the risk of starting the power tool accidentally.
d) Store idle power tools out of the reach of children and do not allow persons unfamiliar with the power tool or these instructions to operate the power tool. Power tools are dangerous in the hands of untrained users.
e) Maintain power tools. Check for misalignment or binding of moving parts, breakage of parts and any other condition that may affect the power tool's operation. If damaged, have the power tool repaired before use. Many accidents are caused by poorly maintained power tools.
f) Keep cutting tools sharp and clean. Properly maintained cutting tools with sharp cutting edges are less likely to bind and are easier to control.
g) Use the power tool, accessories and tool bits etc. in accordance with these instructions, taking into account the working conditions and the work to be performed. Use of the power tool for operations different from those intended could result in a hazardous situation.

5) Service

Have your power tool serviced by a qualified repair person using only identical replacement parts. This will ensure that the safety of the power tool is maintained.

6) Drill Safety Warnings

a) Wear ear protectors when impact drilling. Exposure to noise can cause hearing loss.
b) Use auxiliary handle(s), if supplied with the tool. Loss of control can cause personal injury.
c) Hold power tool by insulated gripping surfaces, when performing an operation where the cutting accessory may contact hidden wiring or its own cord. Cutting accessory contacting a "live" wire may make exposed metal parts of the power tool "live" and could give the operator an electric shock.

NOTE: The above warning applies only to impact drills and may be omitted for drills other than impact drills.

Dear Customer,

Thank you for buying a KEN power tool. Should you have any questions, vagueness or second thoughts about our products, we recommend you to contact our experts in Sales and Service Departments, who will advise you and help you find the right answers to the set questions. Please contact our local distributors or dealers directly.

Attention!

Through poor conditions of the electrical MAINS, shortly voltage drops can appear when starting the EQUIPMENT. This can influence other equipment (eg. Blinking of a lamp). If the MAINS-IMPEDANCE Zmax<0.272 OHM, such disturbances are not expected. (In case of need, you may contact your local supply authority for further information).

-2-

■WASTE DISPOSAL AND ENVIRONMENT PROTECTION

The machine, accessories and packing should be sorted for environmental-friendly recycling.
Only for EC countries:
◆ Do not dispose of power tools into household waste!
According to the European Guideline 2002/96/EC for Waste Electrical and Electronic Equipment and its implementation into national right, power tools that are no longer usable must be collected separately and disposed of in an environmentally correct manner.

■TECHNICAL DATA

Type	J1Z-SH01-16B	6816NB
Max. Diameter of Drilling Steel	Φ16mm	
Max. Diameter of Milling Leaf	Φ130mm	
Current Source	AC	220-240V~ 50Hz
Rated Input Power	1200W	
Idling Rotational Speed	950/min	
Weight	4.5kg	
Standard Spare Parts	Drill Chunk Wrench 1PC Lateral Side Handle 1PC Back Handle 1PC Carbon Brush 2PCS Operating Handbook 1PC	

-7-

■PRACTICAL TIPS

Do not drill into hidden electrical lines or gas and water pipes. Check the area to be worked with a metal detector before starting.
Use only correctly sharpened drill bits, which are suitable for the material being drilled.
For precision working with metal and wood, place the machine in a drill stand.
If the drilling tool become jammed or gets caught, the slip clutch releases.
Remove the load from the machine immediately by pulling back the drilling tool.
The tool belongs to I category tools, the using current source socket must have reliable earth, the operator must wear insulated gloves or stand on the insulated pad if can't confirm the earth is reliable or not.
Please use the tri-cartridge twofold insulation electric cable which size is the same as the size of the tool when using the extended cable, and please confirm that the yellow & green double color wire is connected with the protective earth equipment.
Please use an automatic electric interrupter (30mA) to protect operator's safety if it appears short circuit condition while working in the moist and narrow space with the tool although there's earth protection.

■MAINTENANCE AND CARE

· Unplug the tool from the socket before performing any works on the tool!
· Tool requires no special maintenance, but after some time you must control the parts that are submitted to wear-and-tear under normal operating conditions. This includes the control and replacement of carbon brushes and grease in reducing gear housing. Take the tool to an authorized service centre.
· Keep the tool and supply cord clean. Keep ventilation slots clean and open. Wipe the surface of the tool with a soft cloth!
· It is not allowed to use household cleaning agents that contain petrol, trichloroethylene, ammonia and chlorides. These substances corrode and damage plastic parts of the tool.
· Excessive sparking generally indicates the presence of dirt in the motor or abnormal wear on the carbons.
· In case of electric or mechanical failure, send the tool to a KEN authorized service centre for repair.

■SERVICING AND REPAIRS

If servicing is required, contact one of our listed service centers. It is not allowed and dangerous to perform any individual work on the tool.
◆ Have the tool repaired by authorized persons.
◆ Any repairs of the tool in unauthorized service centers is performed at own responsibility.
◆ The owner of the tool is responsible for all works on the tool that were not performed in authorized service center, and therefore he loses the claim for guarantee.

SAFETY

Read these instructions before operating this power tool. They contain information which will enable you to use the tool safely and help protect those around you. A copy of this instruction leaflet should be kept with the tool so that you can refer to it quickly when undertaking work. Another copy should be made and safely away.
· Please check the drill bit fix at right place before operating.
· Ensure that drill bit don't touch with workpieces and others before starting tools.
· It is necessary for long hair user to wear a calotte, and don't touch rotating parts with fingers and gloves when operating the tools in order to avoid enlacing.
· When drilling wall, floor board or other similar parts, should avoid gas pipe, water pipe and cable, and avoid to touch with steel parts.
· Please keep away touching with electric wire and drill bit when operating the tools.
· Don't lay down the rotating tools, to switch off before putting down the tools.
· Don't touch the drill chuck or other parts around drill chuck immediately after using the tools because the parts with high temperature will harm your skin.
· Use the same specified and double-insulation cable when prolonging electric wire.

We declare under our sole responsibility that the product described under "Technical Data" fulfills all the relevant provisions of the directives 2006/42/EC and the following harmonized standards documents have been used: EN 60745-1; EN 60745-2-1.

Winnenden, 2012-06-06
Rainer Kumpf
Director Product Development
Shanghai KEN Tools CO., Ltd.
No.5 Xinrong Rd., Xinqiao Town, Songjiang District, Shanghai China

CE

SYMBOL

V :Volts
Hz :Hertz
W :Watts
▲ :Safety alert
~ :Alternating Current
CE :CE conformity.

☐ :Double insulation
⚡ :Wear eye protection
⚠ :Wear ear protection
☺ :Wear a dust mask
n :No load Speed
min⁻¹ :Revolutions or reciprocations per minute

⚠ :Please read the instructions carefully before starting the machine.
♻ :Waste electrical products should not be disposed of with household waste. Please recycle where facilities exist. Check with your Local Authority or retailer for recycling advice.

-3-

■OPERATION

※Observe correct mains voltage: The voltage of the power source must agree with the voltage specified on the nameplate of the machine.
◆Assemble or Disassemble the Drill Bit
Insert the drill into the chuck, insert the drill chunk wrench into the three bores on the chuck, and rotate the wrench in a clockwise direction until clamp the drill.
Rotate the wrench in a counter clockwise direction can make the chunk released to disassemble the drill (Picture One).

◆Lateral Side Handle
The lateral side handle can be assembled on the body of tool very conveniently (Picture Two).

◆Switch on/off
Press the switch trigger of tool, it starts up. Loose the trigger, the tool is under closed condition.
The tool switch can be locked if the users need to make the tool run continuously, please press the locking button at the time of pressing the switch trigger completely, press the switch trigger again and loose it can relief the locking (Picture Three).

Picture 1

Picture 2

Picture 3

-4-

◆Assemble and Disassemble the Back Handle
Aim the back handle at the cone bore of the enclosure backside; screw it with M8X25 crossing slot screw tightly. Thus, it's not only convenient to operate, but also lift (Picture Four).
※Please switch off the current source of the tool and draw out the electric plug before assembling the back handle, and it can only use M8X25 crossing slot screw, otherwise, it's possible to damage the tool or dandify body.

◆Using Stirring Leaf to Stir
Adopt stirring leaf stir the mixed liquid, conveniently and quickly, and stir uniformly (Picture Five).

◆Drilling Hole
Please use suitable cooling mixture when drilling the objects with some thicker and harder materials; otherwise it will shorten the service life of the drill.

◆Replacing the Electric Brush
Please replace the electric brush if there's big sparks or the rotation stops during the running. Please use screwdriver to screw the lid of the electric brush and take out the wearing electric brush and install the new ones, and please use hands to try and confirm it can slide freely in the slot, and then install and screw the lid of the electric brush. Please replace two brushes at the same time, and use the specified "KEN" brand electric brush (Picture Six).

Picture 4

Picture 5

Picture 6

-5-

KEN

KEN Holding Co., Ltd.
No.5 Xinrong Rd., Xinqiao Town, Songjiang District, Shanghai China
<http://www.kenpowertools.com>

KEN and KEN logo are registered trademarks of KEN Holding Co., Ltd. All rights reserved. No other company may use KEN logo unless it has the express written permission of KEN Holding Co., Ltd., or is licensed by KEN Holding Co., Ltd. to do so.

©2014.14 5569073

Electric Drill

KEN

6816NB J1Z-SH01-16B

original instructions