

Original instruction

GENERAL SAFETY INSTRUCTIONS

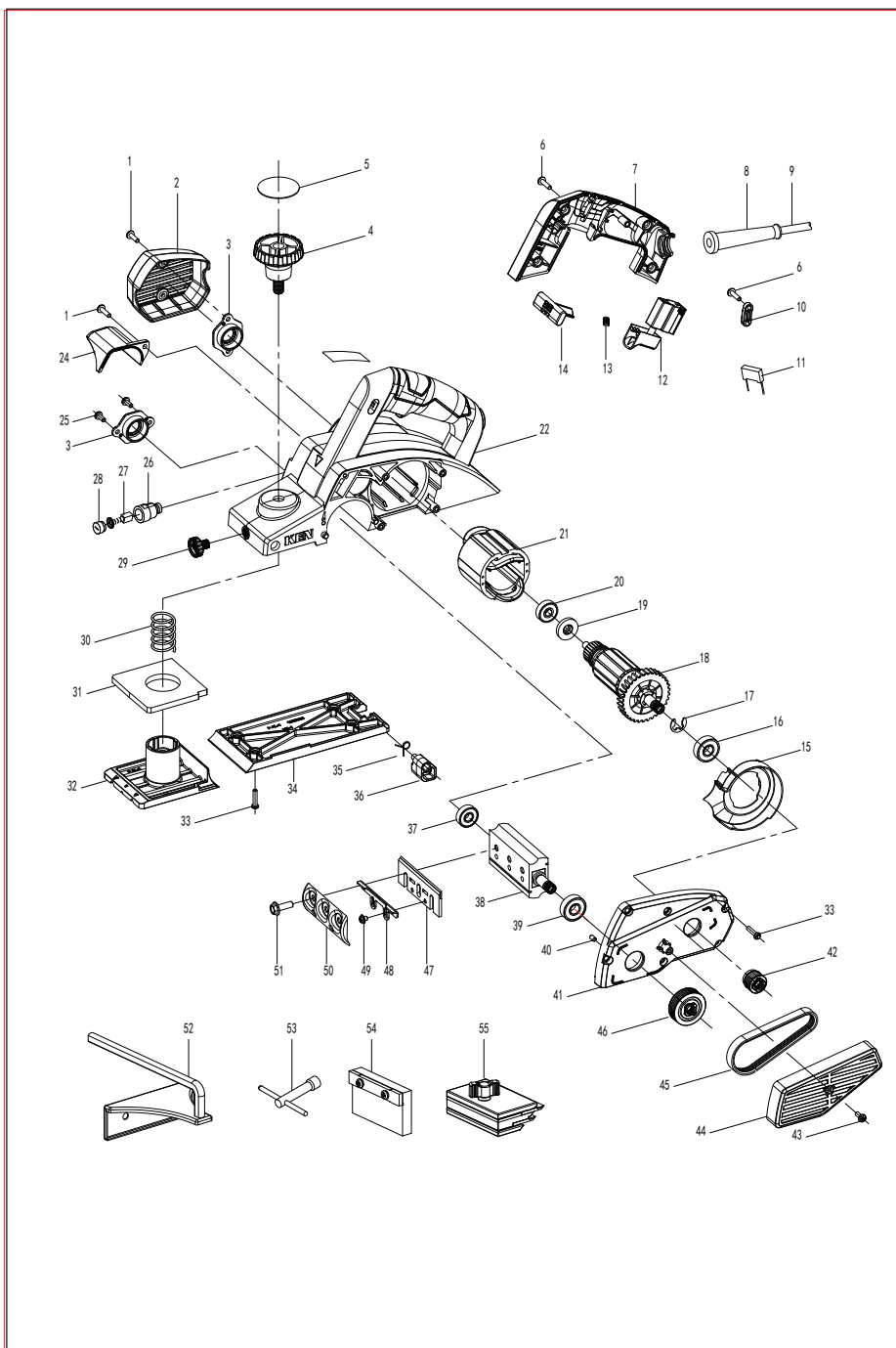
WARNING Read all instructions. Failure to follow all instructions listed below may result in electric shock, fire and/or serious injury. The term "power tool" in all of the warnings listed below refers to your mains operated power tool.

SAVE THESE INSTRUCTIONS.

- 1) **WORK AREA**
 - a) Keep work area clean and well lit. Cluttered and dark areas invite accidents.
 - b) Do not operate power tools in explosive atmospheres, such as in the presence of flammable liquids, gases or dust. Power tools create sparks which may ignite the dust or fumes.
 - c) Keep children and bystanders away while operating a power tool. Distractions can cause you to lose control.
- 2) **ELECTRICAL SAFETY**
 - a) Power tool plugs must match the outlet. Never modify the plugs in any way. Do not use any adapter plugs with earthed power tools. Unmodified plugs and matching outlets will reduce risk of electric shock.
 - b) Avoid body contact with earthed or grounded surfaces such as pipes, radiators, ranges and refrigerators. There is an increased risk of electric shock if your body is earthed or grounded.
 - c) Do not expose power tools to rain or wet conditions. Water entering a power tool will increase the risk of electric shock.
 - d) Do not abuse the cord. Never use the cord for carrying, pulling or unplugging the power tool. Keep cord away from heat, oil, sharp edges or moving parts. Damaged or entangled cords increase the risk of electric shock.
 - e) When operating a power tool outdoors, use an extension cord suitable for outdoor use. Use of a cord suitable for outdoor use reduces the risk of electric shock.
 - f) If operating a power tool in a damp location is unavoidable, use a residual current device (RCD) protected supply. Use of an RCD reduces the risk of electric shock.
- 3) **PERSONAL SAFETY**
 - a) Stay alert, watch what you are doing and use common sense when operating a power tool. Do not use a power tool while you are tired or under the influence of drugs, alcohol or medication. A moment of inattention while operating power tools may result in serious personal injury.
 - b) Use safety equipment. Always wear eye protection. Safety equipment such as dust mask, no-skid safety shoes, hard hat, or hearing protection used for appropriate conditions will reduce personal injuries.
 - c) Avoid accidental starting. Ensure the switch is in the off position before plugging in. Carrying power tools with your finger on the switch or plugging in power tools that have the switch on invites accidents. Prevent unintentional starting. Ensure the switch is in the off-position before connecting to power source and/or battery pack, picking up or carrying the tool. Carrying power tools with your finger on the switch or energising power tools that have the switch on invites accidents.
 - d) Remove any adjusting key or wrench before turning the power tool on. A wrench or a key left attached to a rotating part of the power tool may result in personal injury.
 - e) Do not overreach. Keep proper footing and balance at all times. This enables better control of the power tool in unexpected situations.
 - f) Dress properly. Do not wear loose clothing or jewelry. Keep your hair, clothing and gloves away from moving parts. Loose clothes, jewelry or long hair can be caught in moving parts.
 - g) If devices are provided for the connection of dust extraction and collection facilities, ensure these are connected and properly used. Use of these devices can reduce dust related hazards.

PARTS LIST of the Mod.1982 ELECTRIC PLANER

No.	Code	Name	Remark	No.	Code	Name	Remark
1	222001	Tapping screw	ST4X14	31	343005	Foam mat	
2	315042	Rear cap		32	166017	Front base	
3	162080	Bearing cover		33	22101	Tapping screw	ST4X18
4	310270	Adjustment handwheel		34	166018	Rear base	
5	540358	Label		35	154028	Torsional spring	
6	222002	Tapping screw	ST4X16	36	310272	Liftout plate	
7	314138	Handle cover		37	211020	Bearing	608-2Z
8	3320061	Cord sleeve		38	160058	Cutter shaft	
9	4110020	Power cord		39	211033	Bearing	6000-2Z
10	318006	Cord clamp		40	334001	Rubber pin	
11	443008	Capacitor		41	168018	Cover board	
12	445097	Switch		42	182060	Small belt wheel	
13	151076	Spring		43	231017	Screw	M4X10
14	323014	Switch rod		44	326030	Belt protector	
15	321067	Air deflector		45	344001	V-ribbed belt	
16	211096	Bearing	6000-VV	46	182059	Big belt wheel	
17	255007	Retainer	9	47	613009	Blade	
18	442139	Armature		48	110266	Blade adjusting plate	
19	319051	Retainer		49	231097	Screw	M4X15
20	211082	Bearing	627-2Z	50	110267	Rabbit turner	
21	441142	Field coil		51	234054	Hex bolt	M6X18
22	313117	Housing		52	620069	edge damper	
24	326029	Dust protector		53	623033	Socket wrench	
25	221006	Tapping screw		54	712066	Opposite Cutter Frame	
26	432045	Brush holder	ST4X10	55	712067	Grinding cutter frame	
27	431081	Carbon brush					
28	433039	Brush holder cap					
29	310271	Small knob					
30	151089	Spring					



4) POWER TOOL USE AND CARE

- a) Do not force the power tool. Use the correct power tool for your application. The correct power tool will do the job better and safer at the rate for which it was designed.
- b) Do not use the power tool if the switch does not turn it on and off. Any power tool that cannot be controlled with the switch is dangerous and must be repaired.
- c) Disconnect the plug from the power source before making any adjustment, changing accessories, or storing power tools. Such preventive safety measures reduce the risk of starting the power tool accidentally.
- d) Store idle power tools out of the reach of children and do not allow persons unfamiliar with the power tool or these instructions to operate the power tool. Power tools are dangerous in the hands of untrained users.
- e) Maintain power tools. Check for misalignment or binding of moving parts, breakage of parts and any other condition that may affect the power tools operation. If damaged, have the power tool repaired before use. Many accidents are caused by poorly maintained power tools.
- f) Keep cutting tools sharp and clean. Properly maintained cutting tools with sharp cutting edges are less likely to bind and are easier to control.
- g) Use the power tool, accessories and tool bits etc., in accordance with these instructions and in the manner intended for particular type of power tool, taking into account the working conditions and the work to be performed. Use the power tool for operations different from those intended could result in a hazardous situation.
- h) **Save all warnings and instructions for future reference.**
- i) Recommendation: The tool always be supplied via residual current device with a rated residual current of 30 mA or less.

5) SERVICE

Have your power tool serviced by a qualified repair person using only identical replacement parts. This will ensure that the safety of the power tool is maintained.

IMPORTANT: Hold power tool by insulated gripping surfaces, when performing an operation where the cutting accessory may contact hidden wiring or its own cord. Cutting accessory contacting a "live" wire may make exposed metal parts of the power tool "live" and could give the operator an electric shock.

Dear Customer,
Thank you for buying a KEN power tool. Should you have any questions, vagueness or second thoughts about our products, we recommend you to contact our experts in Sales and Service Departments, who will advise you and help you find the right answers to the set questions. Please contact our local distributors or dealers directly.

SAFETY

- Read these instructions before operating this power tool. They contain information which will enable you to use the tool safely and help protect those around you. A copy of this instruction leaflet should be kept with the tool so that you can refer to it quickly when undertaking work. Another copy should be made and safely away.
- Do check the set bolt of the blade on the cutter frame is screwed tightly before planning, there's no metal materials or sand stone on the processing object.
 - Do check and confirm the blade doesn't touch the processing object and other objects before switching on the tool.
 - Please make the tool idle running for several seconds after switching on it, confirm it has no shock or sway with trying by hands, otherwise, it's possible to occur poor installing or unbalanced blade, it shall be adjusted.
 - Do hold the tool firmly with both hands during planning, please keep body from the tool with distance more than 200mm (8 inch), the hands must be kept from the rotating part.
 - Do switch off the tool and draw out the plug from the current source, and wait the blade stops turning completely before replacing the planning cutter or making any adjustment.
 - The cutter ditch of the cutter frame mouth or emerging scraps mouth is easy to accumulate the scraps when planes moist wood. At this time, do use the wood bar to clean out the scraps but do not use fingers to do the work.
 - Don't set the tool during rotation with leaving hands; do switch off the tool before laying down the electric planer, and put the planning plate upwards on the soft object.
 - Do keep the conducting wire far away from the planning area during operation, and make it doesn't be tore by the processing object.
 - It's forbidden to use bench vice or clamp to counter clamp the electric planer and do planning work on it.

SERVISING AND REPAIRS

If servicing is required, contact one of our listed service centers. It is not allowed and dangerous to perform any individual work on the tool.
 ♦ Have the tool repaired by authorized persons.
 ♦ Any repairs of the tool in unauthorized service centers is performed at own responsibility.
 ♦ The owner of the tool is responsible for all works on the tool that were not performed in authorized service center, and therefore he loses the claim for guarantee.

WASTE DISPOSAL AND ENVIRONMENT PROTECTION

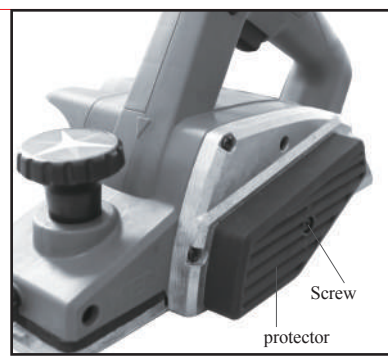
The machine, accessories and packing should be sorted for environmental-friendly recycling. Only for EC countries:
 ♦ Do not dispose of power tools into household waste!
 According the European Guideline 2002/96/EC for Waste Electrical and Electronic Equipment and its implementation into national right, power tools that are no longer usable must be collected separately and disposed of in an environmentally correct manner.

TECHNICAL DATA

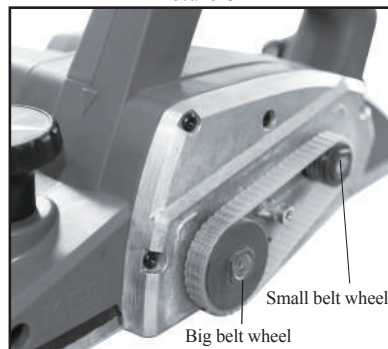
Type	M1B-SH03-82x2	1982
Maximum Planning Width	82mm	
Maximum Planning Depth	2mm	
Groove Depth	0~7mm	
Current Source	AC 220-240V~	50HZ
Rated Input Power	710W	
output Power	400W	
Idling Rotational Speed	16000/min	
Weight	2.5kg	
insulation degree	II	
Standard Spare Parts	Grinding Cutter Frame 1PC Opposite Cutter Frame 1PC Carbon Brush 2PCS Edge Damper 1PC Socket Wrench 1PC Operating Handbook 1PC Service book 1PC	

◆ Belt replacement

Unscrew the belt protector to take out the worn-out belt. Clean both the big belt wheel and the small belt wheel before install the new belt. Fix the new belt onto the small wheel and then onto the big wheel; remember to turn the wheel when installing. Remarks: belt must be well fit to the teeth of the wheel. Screw the belt protector to complete the replacement. (Picture Eight & Picture Nine)



Picture 8



Picture 9

■ PRACTICAL TIPS

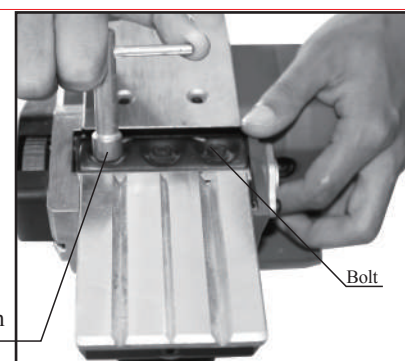
- ◆ Do draw out the plug from the current source when assembling or disassembling the planning cutter.
- ◆ Please use the blade which size and weight is same as the blade equipped with the tool when replacing the planning cutter, otherwise, it will cause the vibration of the tool and shorten the service life of the tool or damage the tool.
- ◆ Do screw the set bolt on the blade, or it'll damage the tool or damage body.
- ◆ Do check and confirm the switch trigger is under closed condition before connecting the tool with external electric power.

■ MAINTENANCE AND CARE

- Unplug the tool from the socket before performing any works on the tool!
- Tool requires no special maintenance, but after some time you must control the parts that are submitted to wear-and-tear under normal operating conditions. This includes the control and replacement of carbon brushes. Take the tool to an authorized service centre.
- Keep the tool and supply cord clean. Keep ventilation slots clean and open. Wipe the surface of the tool with a soft cloth!
- It is not allowed to use household cleaning agents that contain petrol, trichloroethylene, ammonia and chlorides. These substances corrode and damage plastic parts of the tool.
- Excessive sparking generally indicates the presence of dirt in the motor or abnormal wear on the carbons.
- In case of electric or mechanical failure, send the tool to a KEN authorized service centre for repair.

■ OPERATION

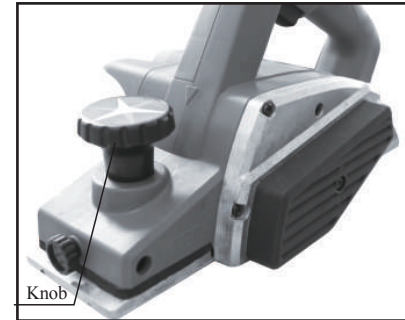
◆ Assemble or Disassemble the Planning Cutter
The planning cutter is equipped on the tool body before it leaves KEN factory, use the secker wrench to screw off three blade set bolts on the cutter body if needing to adjust the planning cutter, then the blade outer pressing plate, inner pressing plate and blade can be taken off (Picture One).



Picture 1

◆ Adjustment of Cutting Depth

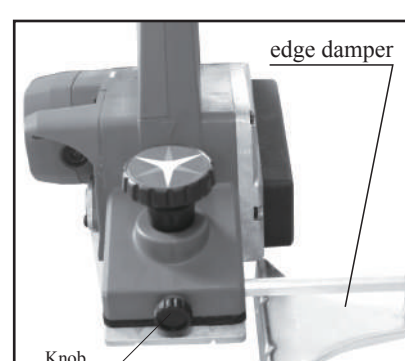
Rotate the rotating button of the tool forepart, the cutting depth can be adjusted, it adds the cutting depth when rotating clockwise, and reduces the cutting depth when rotating counter clockwise (Picture Two).



Picture 2

◆ The Usage of Edge Damper

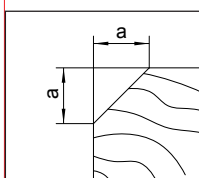
Please use edge damper when needing to plane trapezoid or stoop shape on the project. Insert the edge damper into the hole of tool forepart, draw a cutting line on the processing object, and make the cutting line align the edge of the planning cutter. Adjust the edge damper and the edge of the processing object to touch with each other, and then tighten the knob to fix the edge damper (Picture Three). If needing to increase the length of the damper, just add a suitable wood chip in addition.



Picture 3

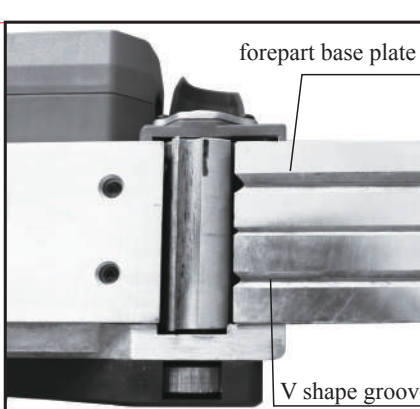
◆ Plane Angle

If needing to plane angles on the object, please joint the "V" shape groove on the forepart base plate and planning angle position of the project perfectly before making planning work (Picture Four&Picture Five).



Picture 5

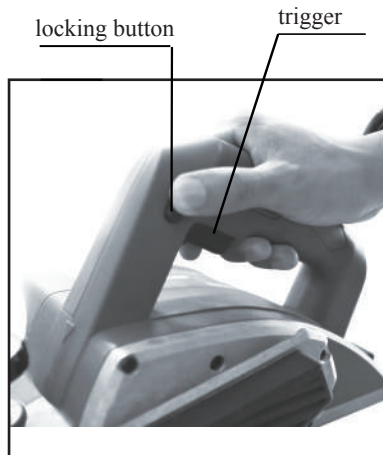
Dimension of groove a (mm)	
NON.	0-4
MIN.	2-6
MID.	4-9
MAX.	6-10



Picture 4

◆ Switch

Press the switch trigger, the tool turns round; release the trigger, the tool powers down and stops running slowly (Picture Six). If needing to make the tool turns continuously, press the trigger and then press the switch locking button. Press the trigger again and release it at once, then it can eliminate continuous running.



Picture 6

◆ Replace the Electric Brush

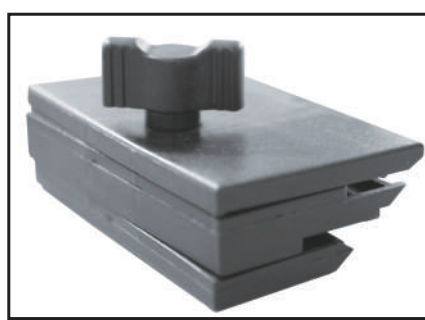
The tool has set the electric brush limited position equipment especially, please replace the electric brush if there's big sparks or the rotation stops during the running. Screw the lid of the electric brush with the screwdriver, take out the wearing electric brush and install the new ones, and please use hands to try and confirm it can slide freely in the slot, and then install the lid of the electric brush and screw tightly. Please replace two brushes at the same time, and use the specified "KEN" brand electric brush.

◆ Effective and Safe Planning Methods

Put the front base plate on the object in level before planning, and make the blade has not any touch with the object, then move the tool forwards slowly after switching on the tool and wait the blade attains maximum speed. Apply pressure to the tool forepart firstly at the beginning of planning, and apply pressure to the tool back part when the planning is going to be finished. The cutting depth and pushing speed decides the processing effects. It can add planning depth when undertaking rough planning, but if doing delicate planning, it needs to reduce the cutting depth and slow down pushing speed. If meeting block turning in the course of planning, please release the tool switch immediately, withdraw the tool from the cutting area.

◆ Grinding Planning Cutter

The planning cutter shall be grinded if it's blunt or has nick. Do use the grinding cutter frame when grinding. Release the butterfly nut of the cutter frame, insert two blades into the frame, and make the back side of the blade touches the inner catching edge of the frame, then screw the butterfly nut (Picture Seven). Sleep the knife grinder in the water for two to three minutes, stick the slope of two planer cutter edge which fixes the grinding cutter frame to the knife grinder to grind, take out the planning cutter after grinding the cutter edge sharp and smooth.



Picture 7

Electric Planer

1982 M1B-SH03-82X2

original instructions

KEN
 KEN Holding Co., Ltd.
 No.5 Xinrang Rd., Xinqiao Town, Songjiang District, Shanghai China
<http://www.kenpowertools.com>

KEN and KEN logo are registered trademarks of KEN Holding Co., Ltd. All rights reserved. No other company may use KEN logo unless it has the express written permission of KEN Holding Co., Ltd. or its licensee by KEN Holding Co., Ltd to do so.