

**Polymak®**

Solutions Provider For Industry & Trade

**Polymak Tools(India)Pvt.Ltd**

186/187, P.H Road,Alsa Towers,Kilpauk,  
Chennai – 600 010,  
Tel. : +91–44–48631869  
E–mail : info@polymak.co.in  
Visit us at : www.polymak.co.in

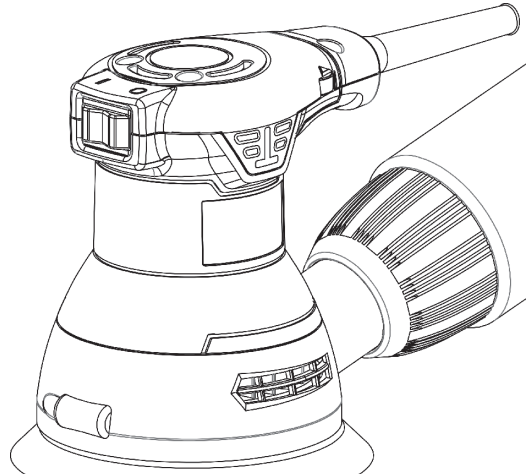
**Polymak®**

Solutions Provider For Industry & Trade

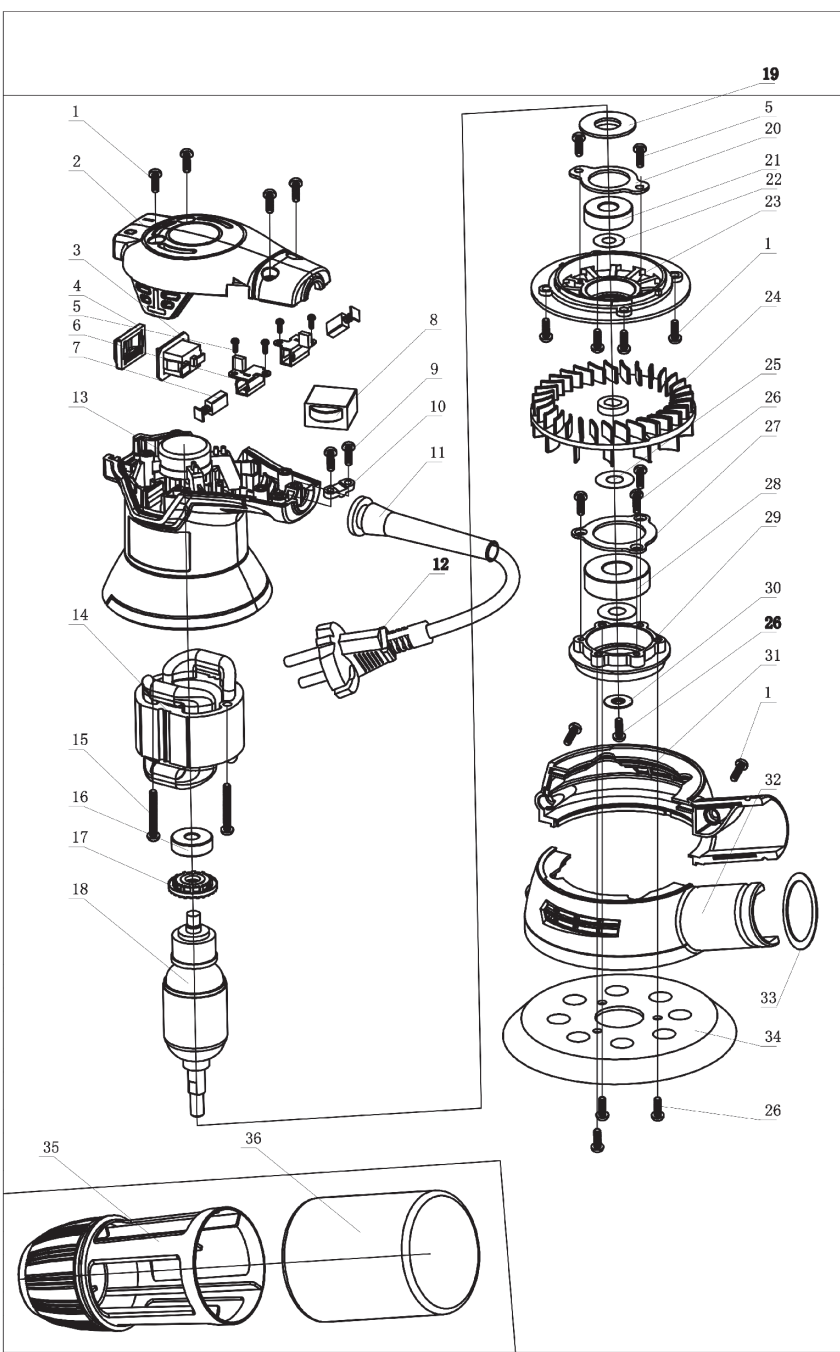
**Orbital sander**

**125mm**

**INSTRUCTION MANUAL**



Read and follow all safety precautions in instruction manual.



The term "power tool" in the warnings refers to your mains-operated (corded) power tool or battery-operated (cordless) power tool.

**INSTRUCTION**

- **Keep work area clean and well lit.** Cluttered or dark areas invite accidents.
- **Do not operate power tools in explosive atmospheres, such as in the presence of flammable liquids, gases or dust.** Power tools create sparks which may ignite the dust or fumes.
- **Keep children and bystanders away while operating a power tool.** Distractions can cause you to lose control.

**Electrical safety**

- **Power tool plugs must match the outlet. Never modify the plug in any way. Do not use any adapter plugs with earthed (grounded) power tools.** Unmodified plugs and matching outlets will reduce risk of electric shock.
- **Avoid body contact with earthed or grounded surfaces, such as pipes, radiators, ranges and refrigerators.** There is an increased risk of electric shock if your body is earthed or grounded.
- **Do not expose power tools to rain or wet conditions.** Water entering a power tool increases the risk of electric shock.
- **Do not abuse the cord. Never use the cord for carrying, pulling or unplugging the power tool. Keep cord away from heat, oil, sharp edges and moving parts.** Damaged or entangled cords increase the risk of electric shock.
- **When operating a power tool outdoors, use an extension cord suitable for outdoor use. Use a cord suitable for outdoor use reduces the risk of electric shock.**
- **If operating a power tool in a damp location is unavoidable, use a residual current device (RCD) protected supply. Use of an RCD reduces the risk of electric shock.**

**Personal safety**

- **Stay alert, watch what you are doing and use common sense when operating a power tool. Do not use a power tool while you are tired or under the influence of drugs, alcohol or medication. A moment of inattention while operating power tools may result in serious personal injury.**
- **Use personal protective equipment. Always wear eye protection. Protective equipment such as dust mask, non-skid safety shoes, hard hat, or hearing protection used for appropriate conditions will reduce personal injuries.**
- **Prevent unintentional starting. Ensure the switch is in the off-position before connecting to power source and/or battery pack, picking up or carrying the tool. Carrying power tools with your finger on the switch or on triggering power tools that have the switch on makes accidents.**
- **Remove any adjusting key or wrench before turning the power tool on. A wrench or key left attached to a rotating part of the power tool may result in personal injury.**

**Manuel d'instruction**

- **Conserver la zone de travail propre et bien éclairée.** Les zones en désordre ou sombres sont propices aux accidents.
- **Né pas faire fonctionner les outils électriques en at-mosphère explosive, par exemple en présence de li-quides inflammables, de gaz ou de poussières.** Les ou-tils électriques produisant des étincelles ou peuvent enflammer les poussières ou les fumées.
- **Maintenez les enfants et les personnes présentes à l'écart pendant l'utilisation de l'outil.** Les distractions peuvent vous faire perdre le contrôle de l'outil.

**Sécurité électrique**

- **Il faut que les fiches de l'outil électrique soient adap-tées aux sockets. Ne jamais modifier la fiche de quelque fa-çon que ce soit. Ne pas utiliser d'adaptateurs avec des outlets à branchement de terre.** Les fiches non modifiées et des sockets adaptés réduisent le risque de choc élec-trique.
- **Eviter tout contact du corps avec des surfaces reliées à la terre telles que les tuyaux, les radiateurs, les cuisini-ères et les réfrigérateurs.** Il existe un risque accru de choc électrique si votre corps est relié à la terre.
- **Ne pas exposer les outils à la pluie ou à des conditions humides.** L'humidité dans l'outil ou sur l'utilisateur aug-mente le risque de choc électrique.
- **Né pas maltraiter le cordon.** Ne jamais utiliser le cordon pour porter, tirer ou débrancher l'outil. Maintenir le cordon à l'écart de la chaleur, du frottement, des arêtes vives et des parties en mouvement. Les cordons endommagés ou enroulés augmentent le risque de choc électrique.
- **L'événement d'un outil à l'extérieur, utiliser un pro-longateur adapté à l'alimentation extérieure.** L'utilisation d'un cordon adapté à l'alimentation extérieure réduit le risque de choc électrique.

**Sécurité des personnes**

- **Rester vigilant, regarder ce que vous êtes en train de faire et faire preuve de bon sens pendant l'utilisation de l'outil. Ne pas utiliser un outil lorsque vous êtes fatigué ou sous l'influence de drogues, d'alcool ou de médica-ments. Un moment d'inattention en cours d'utilisation d'un outil peut entraîner des blessures graves des per-sonnes.**
- **Utiliser un équipement de sécurité. Toujours porter une protection pour les yeux.** Les équipements de sécu-rité tels que les masques contre les poussières, les chaus-sures de sécurité antidérapantes, les casques ou les pro-tecteurs acoustiques utilisés pour les conditions appropriées réduisent les blessures des personnes.
- **Eviter tout désarmage intempestif. S'assurer que l'in-terrupteur est en position arrêt avant de brancher l'ou-il ou secteur et/ou au bloc de batteries, de ramasser**

#### 1. SAFETY WARNINGS

##### A General power tool safety warnings

**WARNING** Read all safety warnings, instructions, illustrations and specifications provided with this power tool. Failure to follow all instructions listed below may result in electric shock, fire and/or serious injury.

Save all warnings and instructions for future reference.

The term "power tool" in the warnings refers to your mains-operated (corded) power tool or battery-operated (cordless) power tool.

- 1) Work area safety
  - a) **Keep work area clean and well lit.** Cluttered or dark areas invite accidents.
  - b) **Do not operate power tools in explosive atmospheres, such as in the presence of flammable liquids, gases or dust.** Power tools create sparks which may ignite the dust or fumes.
  - c) **Keep children and bystanders away while operating a power tool.** Distractions can cause you to lose control.
- 2) Electrical safety
  - a) **Power tool plugs must match the outlet. Never modify the plug in any way. Do not use any adapter plugs with earthed (grounded) power tools. Unmodified plugs and matching outlets will reduce risk of electric shock.**
  - b) **Avoid body contact with earthed or grounded surfaces, such as pipes, radiators, ranges and refrigerators.** There is an increased risk of electric shock if your body is earthed or grounded.
  - c) **Do not expose power tools to rain or wet conditions.** Water entering a power tool will increase the risk of electric shock.
  - d) **Do not abuse the cord. Never use the cord for carrying, pulling or unplugging the power tool. Keep cord away from heat, oil, sharp edges or moving parts.** Damaged or entangled cords increase the risk of electric shock.
  - e) **When operating a power tool outdoors, use an extension cord suitable for outdoor use.** Use of a cord suitable for outdoor use reduces the risk of electric shock.
  - f) **If operating a power tool in a damp location is unavoidable, use a residual current device (RCD) protected supply. Use of an RCD reduces the risk of electric shock.** NOTE: The term "Residual current device (RCD)" can be replaced by the term "ground fault interrupter (GFI)" or "earth leakage circuit breaker (ELCB)".
- 3) Personal safety
  - a) **Stay alert, watch what you are doing and use common sense when operating a power tool. Do not use a power tool while you are tired or under the influence of drugs, alcohol or medication. A moment of inattention while operating power tools may result in serious personal injury.**
  - b) **Use personal protective equipment. Always wear eye protection. Protective equipment such as a dust mask, non-skid safety shoes, hard hat or hearing protection used for appropriate conditions will reduce personal injuries.**
  - c) **Prevent unintentional starting. Ensure the switch is in the off-position before connecting to power source and/or battery pack, picking up or carrying the tool. Carrying power tools with your finger on the switch or energising power tools that have the switch on invites accidents.**
  - d) **Remove any adjusting key or wrench before turning the power tool on. A wrench or a key left attached to a rotating part of the power tool may result in personal injury.**
  - e) **Do not overreach. Keep proper footing and balance at all times. This enables better control of the power tool in unexpected situations.**
  - f) **Dress properly. Do not wear loose clothing or jewellery. Keep your hair and clothing away from moving parts. Loose clothes, jewellery or long hair can be caught in moving parts.**
  - g) **If devices are provided for the connection of dust extraction and collection facilities, ensure these are connected and properly used. Use of dust collection can reduce dust-related hazards.**

PART	DESCRIPTION	QUANTITY
1	Screw ST4X14	10
2	Up cover	1
3	Switch	1
4	Dust sleeve	1
5	Screw ST3X8	6
6	Brush holder	2
7	Carbon Brush	2
8	Governor	1
9	Screw ST4X12	2
10	Cord clamp	1
11	Cord protector	1
12	Cord and plug	1
13	Housing	1
14	Stator	1
15	Screw ST4. 2X42	2
16	Bearing 627RS	1
17	Rear dust sleeve	1
18	Rotor	1
19	Front dust sleeve	1
20	Bearing cover	1
21	Bearing 629RS	1
22	Bearing washer	1
23	Middle cover	1
24	Fan	1
25	Washer	2
26	Screw M4X12	6
27	Bearing cover	1
28	Bearing 6202RS	1
29	Bearing pedestal	1
30	Bearing washer	1
31	Shield	1
32	Shield cover	1
33	Seal ring	1
34	Base	1
35	Dust collecting rack	1
36	Dust collection bag	1

- Clean the casing with a damp cloth. Do not use solvents. Wipe dry.
- Remove the dust bag and carefully empty it. Avoid inhaling wood dust. Wash the dust bag in cold soapy water and allow to dry.
- Check before use that the tool, power cord, plug and accessories are intact and undamaged. The tool must only be repaired by an authorised service centre or other qualified personnel.
- Products that have reached the end of their useful life must be disposed of in accordance with local regulations.

#### 5. DISPOSAL



Electrical products should not be discarded with household products. According to the European Directive 2012/19/EU on waste electrical and electronic equipment and its implementation into national law, electrical products used must be collected separately and disposed of at collection points provided for this purpose. Talk with your local authorities or dealer for advice on recycling.

h) **Do not let familiarity gained from frequent use of tools allow you to become complacent and ignore tool safety principles.** A careless action can cause severe injury within a fraction of a second.

- Power tool use and care**
  - Do not force the power tool. Use the correct power tool for your application.** The correct power tool will do the job better and safer at the rate for which it was designed.
  - Do not use the power tool if the switch does not turn it on and off. Any power tool that cannot be controlled with the switch is dangerous and must be repaired.**
  - Disconnect the plug from the power source and/or remove the battery pack, if detachable, from the power tool before making any adjustments, changing accessories, or storing power tools. Such preventive safety measures reduce the risk of starting the power tool accidentally.**
  - Store idle power tools out of the reach of children and do not allow persons unfamiliar with the power tool or these instructions to operate the power tool. Power tools are dangerous in the hands of untrained users.**
- Maintain power tools and accessories. Check for misalignment or binding of moving parts, breakage of parts and any other condition that may affect the power tool's operation. If damaged, have the power tool repaired before use. Many accidents are caused by poorly maintained power tools.**
- Keep cutting tools sharp and clean. Properly maintained cutting tools with sharp cutting edges are less likely to bind and are easier to control.**
- Use the power tool, accessories and tool bits etc. in accordance with these instructions, taking into account the working conditions and the work to be performed. Use of the power tool for operations different from those intended could result in a hazardous situation.**
- Keep handles and grasping surfaces dry, clean and free from oil and grease. Slippery handles and grasping surfaces do not allow for safe handling and control of the tool in unexpected situations.**
- Service**
  - Have your power tool serviced by a qualified repair person using only identical replacement parts. This will ensure that the safety of the power tool is maintained.**

**Additional safety warnings for belt sander**  
Hold the power tool by insulated gripping surfaces, because the sanding surface may contact its own cord. Cutting a "live" wire may expose metal parts of the power tool "live" and could give the operator an electric shock.

If the supply cord is damaged, it must be replaced by a special cord or assembly available from the manufacturer or its service agent.

- Ensure that the ventilation slots are not blocked.**
- Always clamp the workpiece with a clamping device. Do not hold the workpiece by hand.**
- Use the type of abrasive sheet suitable for the type of work to be performed.**
- Never use oversized sanding tools.**
- Never use damaged or worn abrasive sheets, or sheets that do not stick firmly to the sanding tray.**
- Never place your hand or fingers near the sanding pad when the sander is running.**
- Keep the power cord away from the work area.**
- Keep handle and sander free of oil, grease, water and other liquids.**
- Never touch the sander before it stops.**
- Do not touch the workpiece or metal chips before cooling.**
- Do not use the sander to work on magnesium parts.**

**Residual risks**  
Some dusts produced by sanding, sawing, grinding, drilling and other construction operations contain recognized chemical elements capable of causing cancer, birth defects or other reproductive problems. Some examples of these chemicals:

- Lead from base paints
- Crystalline silica from bricks and cement and other masonry products
- Arsenic and chromium from chemically treated wood.

The risk associated with these exposures varies according to the frequency of this type of work. To reduce your exposure to these chemicals: work in a well-ventilated area and use approved safety equipment such as dust masks specifically designed to filter microscopic particles.

#### Symbols

	Read the instruction manual
	Wear an hearing protection
	Wear protective glasses
	Wear a respiratory protection
	WEEE marking for disposal
	Tool of Class II protection (double isolation)

#### Intended Use

The power tool is designed for dry sanding of wood, plastic, metal and mastic surfaces as well as varnished surfaces.

**Vibration and noise emission**  
Sound pressure level: 91 dB(A), K=3 dB  
Sound power level: 102 dB(A), K=3 dB  
Vibration: ah=11.4 ms<sup>-2</sup>, K=1.5 ms<sup>-2</sup>

**Information:**

- The declared vibration total value has been measured in accordance with a standard test method and may be used for comparing one tool with another.
- The declared vibration total value may also be used in a preliminary assessment of exposure.

#### Warnings

- **Read the vibration emission data when actual use of the power tool can differ from the declared total value depending on the ways in which the tool is used, and of the need to identify safety measures to protect the operator that are based on an estimation of exposure in the actual conditions of use (taking account of all parts of the operating cycle such as the times when the tool is switched off and when it is running idle in addition to the trigger time).**
- **Wear hearing protection.**

#### 3. USE

##### Fitting the sandpaper

**IMPORTANT:** Switch off the tool and unplug the power cord before fitting the sandpaper. The sandpaper pad has a Velcro surface for the quick attachment of sandpaper. Brush off any dust from the Velcro surface.

1. Smooth the sandpaper onto the pad.
2. Align the holes in the sandpaper with the holes in the pad.

**Dust extraction**  
Connect the dust bag so that it locks in place. If to Connect a Vacuum cleaner, first use the Connection(7).  
**NOTE:** Dust extraction only works when there are holes in the sandpaper.

**Starting/stopping**  
Connect the electric sander to the power supply.  
Starting Press the switch "I"  
Stopping Press the switch "O".



#### Sanding

1. Place the sanding surface flush with workpiece.
2. Start the tool and move it over the workpiece with circular movements. Do not press the weight of the tool normally produces the right speed and sanding action. Avoid tilting the tool.
3. Continue sanding with finer grades of sandpaper.

#### Polishing

Apply the polish evenly, allow to dry and then start polishing. When you have finished, tilt the tool slowly from the workpiece before switching off.

#### 4. MAINTENANCE

- Clean the dust extraction holes regularly with a dry brush.