

Polymak[®]

Solutions Provider For Industry & Trade

Polymak Tools(India)Pvt.Ltd

186/187, P.H Road,Alsa Towers,Kilpauk,
Chennai – 600 010,

Tel. : +91-44-48631869

E-mail : info@polymak.co.in

Visit us at : www.polymak.co.in

Polymak[®]

Solutions Provider For Industry & Trade

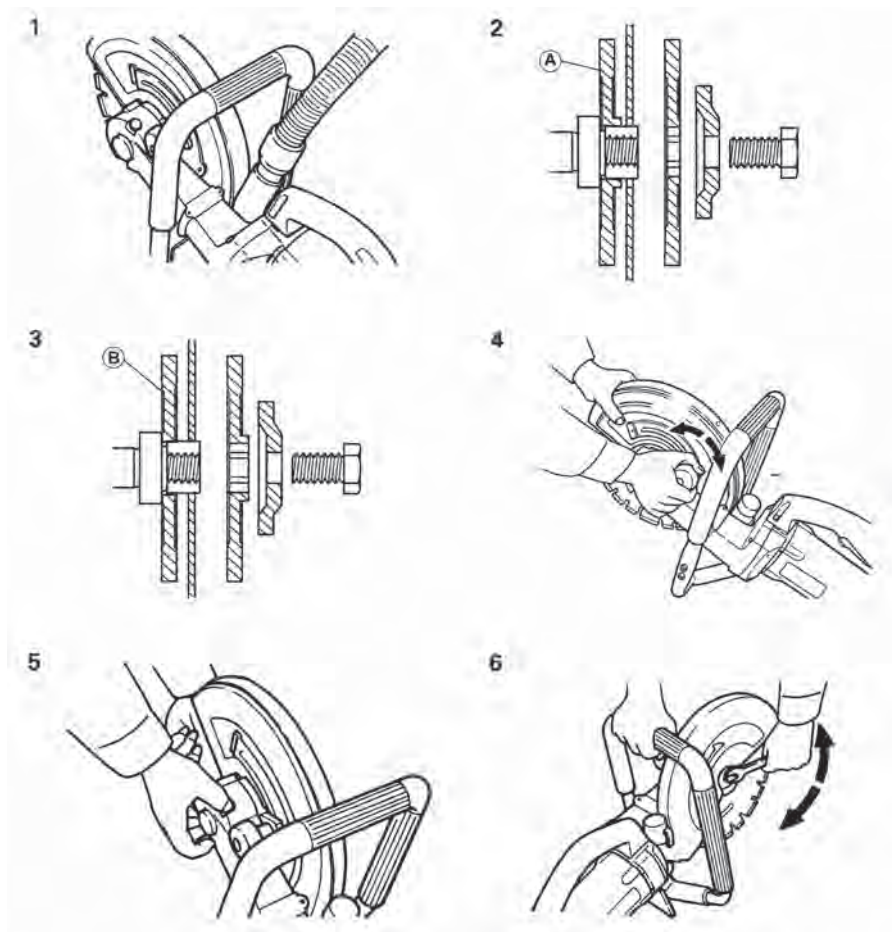
CONCRETE CUTTER

PM355RS

INSTRUCTION MANUAL



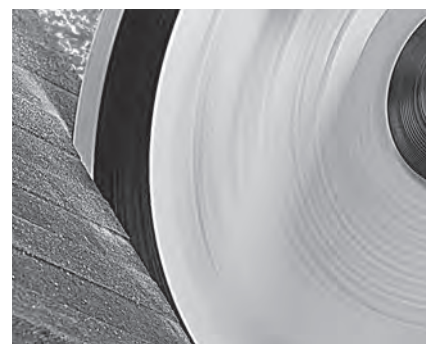
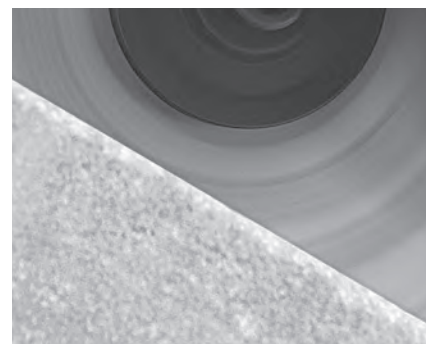
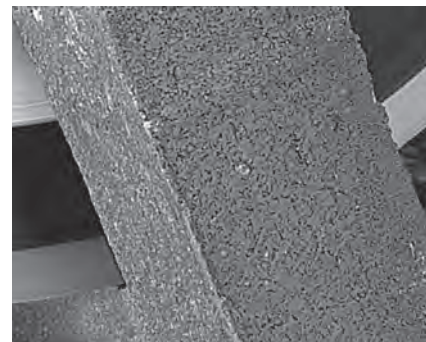
Read and follow all safety precautions in instruction manual.



IMPORTANT

GB

Please read these operating and safety instructions carefully and completely. For your own safety, before using this equipment check that the voltage is correct and that all handles and parts are firmly secured.



GENERAL SAFETY RULES

GB



WARNING! READ AND UNDERSTAND ALL INSTRUCTIONS BEFORE OPERATING THIS PRODUCT. FAILURE TO FOLLOW ALL INSTRUCTIONS LISTED BELOW, MAY RESULT IN ELECTRIC SHOCK, FIRE AND / OR SERIOUS PERSONAL INJURY.

SAVE THESE INSTRUCTION FOR FUTURE REFERENCE.

WARNING! WHEN USING ELECTRIC TOOLS BASIC SAFETY PRECAUTIONS SHOULD ALWAYS BE FOLLOWED TO REDUCE THE RISK OF FIRE, ELECTRIC SHOCK AND PERSONAL INJURY INCLUDING THE FOLLOWING.

Read all these instructions before attempting to operate this product and save these instructions.

The term "power tool" in the warnings refers to your mains-operated (corded) power tool or battery-operated (cordless) power tool.

1) Work Area Safety

- a)** Keep work area clean and well lit. Cluttered or dark areas invite accidents.
- b)** Do not operate power tools in explosive atmospheres, such as in the presence of flammable liquids, gases or dust. Power tools create sparks which may ignite the dust or fumes.
- c)** Keep children and bystanders away while operating a power tool. Distractions can cause you to lose control.

2) Electrical Safety

- a)** Power tool plugs must match the outlet. Never modify the plug in any way. Do not use any adapter plugs with earthed (grounded) power tools. Unmodified plugs and matching outlets will reduce risk of electric shock.
- b)** Avoid body contact with earthed or grounded surfaces, such as pipes, radiators, ranges and refrigerators. There is an increased risk of electric shock if your body is earthed or grounded.
- c)** Do not expose power tools to rain or wet conditions. Water entering a power tool will increase the risk of electric shock.
- d)** Do not abuse the cord. Never use the cord for carrying, pulling or unplugging the power tool. Keep cord away from heat, oil, sharp edges or moving parts. Damaged or entangled cords increase the risk of electric shock.
- e)** When operating a power tool outdoors, use an extension cord suitable for outdoor use. Use of a cord suitable for outdoor use reduces the risk of electric shock.
- f)** If operating a power tool in a damp location is unavoidable, use a residual current device (RCD) protected supply. Use of an RCD reduces the risk of electric shock.

3) Personal Safety

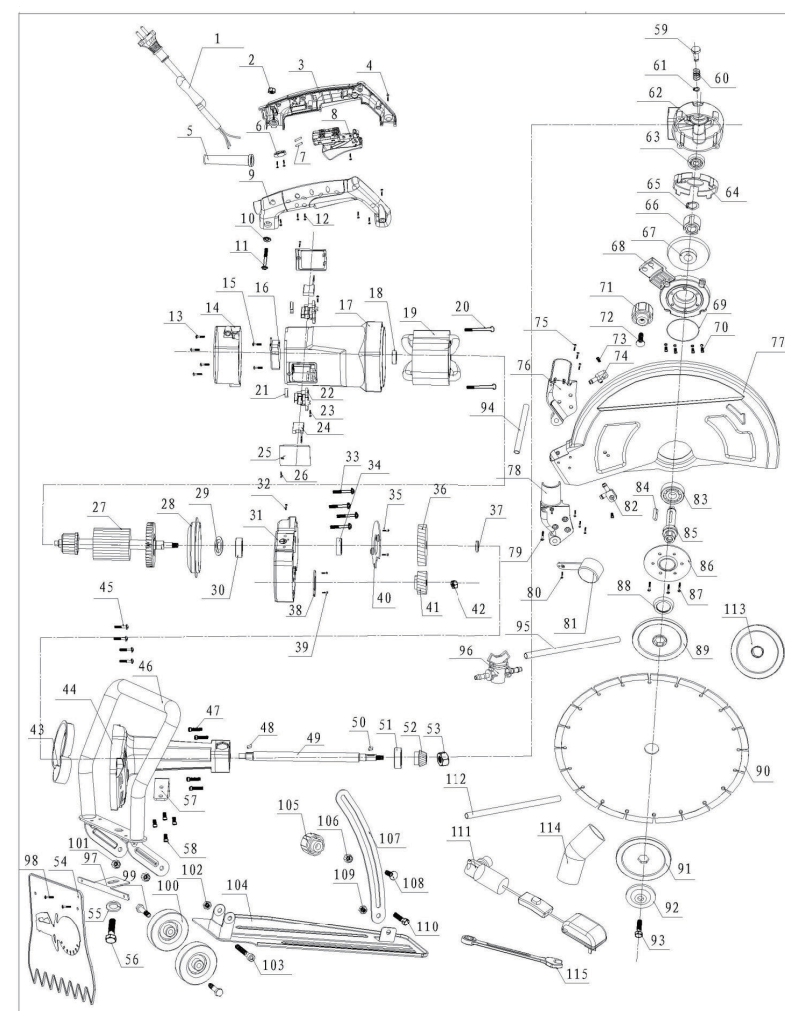
- a)** Stay alert, watch what you are doing and use common sense when operating a power tool. Do not use a power tool while you are tired or under the influence of drugs, alcohol or medication. A moment of inattention while operating power tools may result in serious personal injury.
- b)** Use personal protective equipment. Always wear eye protection. Protective equipment such as dust mask, non-skid safety shoes, hard hat, or hearing protection used for appropriate conditions will reduce personal injuries.
- c)** Prevent unintentional starting. Ensure the switch is in the off-position before connecting to power source and/or battery pack, picking up or carrying the tool. Carrying power tools with your finger on the switch or energising power tools that have the switch on invites accidents.
- d)** Remove any adjusting key or wrench before turning the power tool on. A wrench or a key left attached to a rotating part of the power tool may result in personal injury.
- e)** Do not overreach. Keep proper footing and balance at all times. This enables better control of the power tool in unexpected situations.
- f)** Dress properly. Do not wear loose clothing or jewellery. Keep your hair, clothing and gloves away from moving parts. Loose clothes, jewellery or long hair can be caught in moving parts.
- g)** If devices are provided for the connection of dust extraction and collection facilities, ensure these are connected and properly used. Use of dust collection can reduce dust-related hazards.

4) Power Tool Use & Care

- a)** Do not force the power tool. Use the correct power tool for your application. The correct power tool will do the job better and safer at the rate for which it was designed.
- b)** Do not use the power tool if the switch does not turn it on and off. Any power tool that cannot be controlled with the switch is dangerous and must be repaired.
- c)** Disconnect the plug from the power source and/or the battery pack from the power tool before making any adjustments, changing accessories, or storing power tools. Such preventive safety measures reduce the risk of starting the power tool accidentally.
- d)** Store idle power tools out of the reach of children and do not allow persons unfamiliar with the power tool or these instructions to operate the power tool. Power tools are dangerous in the hands of untrained users.
- e)** Maintain power tools. Check for misalignment or binding of moving parts, breakage of parts and any other condition that may affect the power tool's operation. If damaged, have the power tool repaired before use. Many accidents are caused by poorly maintained power tools.
- f)** Keep cutting tools sharp and clean. Properly maintained cutting tools with sharp cutting edges are less likely to bind and are easier to control.

ELECTRIC DISC CUTTER SERVICE PARTS LIST (REV. 1. 00)

GB



ACCESSORIES

GB

Blades

- 14" (355mm) Diamond Disc Blade

Notice: Fair wear and tear and damage caused by misuse is not covered under the 12 Month guarantee.

CE - DECLARATION OF CONFORMITY

GB

g) Use the power tool, accessories and tool bits etc. in accordance with these instructions, taking into account the working conditions and the work to be performed. Use of the power tool for operations different from those intended could result in a hazardous situation.

5) Service








a) Have your tool repaired by a qualified person. This electric tool complies with the relevant safety rules. Repairs should only be carried out by qualified persons using original spare parts, otherwise this may result in considerable danger to the user.

b) When servicing a tool, use only genuine Evolution replacement parts. Follow instructions in the Maintenance section of this manual. Use of unauthorized parts or failure to follow Maintenance Instructions may create a risk of electric shock or injury.

SPECIFIC SAFETY RULES & SYMBOLS

GB

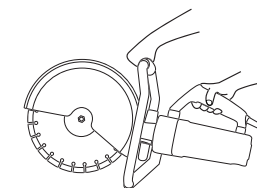
WARNING! DO NOT OPERATE MACHINE IF WARNING AND / OR INSTRUCTION LABELS ARE MISSING OR DAMAGED.

Symbol	Description
V	Volts
A	Amperes
Hz	Hertz
Min	Minutes
~	Alternating current
No	no load speed
	Double Insulated
	Read instruction manual
	Wear safety goggles
	Wear ear protectors
	Wear dust mask
	Wear gloves
	Wear safety boots

It is recommended to use genuine replacement blades. Check blade flanges for debris before installing any new blade. Do not use dull or broken blades. Check blades often for condition and wear. Damaged or worn blades should be replaced immediately. Always make provisions for safe handling of excess material.

PRECAUTIONS ON USING DISC CUTTER

GB



- 1. DANGER:** Keep hands away from cutting area and the blade. Keep your second hand on auxiliary handle, or motor housing. If both hands are holding the saw, they cannot be cut by the blade.
- 2.** Never engage the spindle lock button whilst the machine is running.
- 3.** Never attach any tool except the diamond wheel or cutting wheel as specified by the manufacturer. Do not operate the cutter while applying water.
- 4.** Always check the diamond wheel before starting the machine. If it is cracked, broken or bent, do not use it. Carefully start the machine to check for other abnormalities.
- 5.** Using the diamond wheel to cut metal will shorten its service life or will result in breakage.
- 6.** Start working only when maximum rotation speed is reached.
- 7.** Excessive fore overloads the motor and reduces working efficiency and service life. Always cut concrete, tile or stone with a cutting depth of 50mm or less. If the cutting depth is more than 50mm, cut the workpiece 2 or 3 times. If the workpiece is cut with a cutting depth of more than 50mm, the service life of the diamond wheel will be reduced and the motor may seize.
- 8.** Do not use this machine to cut asbestos.
- 9.** In operations using a cutting wheel, if sparks come out, cover the dust collection adapter with a rubber cap and be sure to wear protective glasses.
- 10.** Never used damaged or incorrect blade washers or bolt. The blade washers and bolt were specially designed for your saw, for optimum performance and safety of operation.

CAUTION! Always unplug the disc cutter before changing blades, servicing, cleaning or adjusting the saw.

SPECIFICATIONS GB

Model Electric Disc Cutter Specifications

■ Motor {220/230V} (Watts): 2800
RPM No load 4800

■ Motor{110V 50HZ} : 15A
RPM No load 4300

Blade Dimensions
■ Maximum Diameter : 14" /355mm
Bore Diameter: 25.4mm
Thickness: 1/8" /3.2mm

■ Maximum Diameter : 16" /420mm
Bore Diameter: 25.4mm
Thickness: 1/8" /3.2mm

ASSEMBLY GB

Your Power Tools disc cutter is shipped complete. Remove all contents from the box and inspect to ensure no damage was incurred during shipping, and that the items listed below are included.

DESCRIPTION	QTY
INSTRUCTION MANUAL	1
SPANNER	1
DIAMOND BLADE	1

CAUTION! ALWAYS DISCONNECT THE DISC CUTTER FROM POWER SOURCE BEFORE MAKING ADJUSTMENTS.

Install the blade as detailed in the "INSTALLING/ REMOVING DIAMOND WHEEL" section.

OPERATION GB

PRIOR TO OPERATION

1. Power source

Ensure that the power source to be utilized conforms to the power requirements specified on the product nameplate.

2. Power switch

Ensure that the power switch is in the OFF position. If the plug is connected to a power receptacle while the power switch is in the ON position, the power tool will start operating immediately, which could cause a serious accident.

3. Extension cord

When the work area is removed from the power source, use an extension cord of sufficient thickness and rated capacity. The extension cord should be kept as short as practicable.

4. Checking and installing the diamond wheel

Check the diamond wheel is a specified one and is not cracked, broken or bent. Check the diamond wheel is installed securely. For installation, refer to "Installing/ removing diamond wheel".

5. Check that the knob used to secure the wheel guard is tight. Make sure that the knob that secures the wheel guard is adequately tight. If this knob is loose, it may result in injury to the operator. (Fig. 4)

INSTALLING DUST COLLECTION HOSE

When cutting a material which generates cutting dust, use the dust collection hose as follows:

- (1) Remove the rubber cap and install the accessory hose. (Fig. 1)
- (2) Install the dust collector hose for the power tool in the accessory hose. (Fig. 1)

CAUTION

- Do not use the dust collection hose when cutting metal.
- Always install a rubber cap on the dust collection adapter when the dust collection hose is not used.

INSTALLING/REMOVING DIAMOND WHEEL

1. Installation

- (1) Wipe the cutting dust from the spindle and washers.
- (2) Make sure the rotation direction of the diamond wheel conforms to the direction indicated on the wheel guard and install the diamond wheel as shown in Fig. 2 and 3.
- Install the wheel washer (A) on the inner side when the hole diameter of the diamond wheel is 22.2 mm.
- Install the wheel washer (B) on the inner side when the hole diameter of the diamond wheel is 20.0 mm.
- (3) Press the lock pin and secure the spindle. Tighten the bolt adequately with the provided wrench. (Fig. 5 and 6)
- (4) Rotate the wheel by hand to ensure the spindle lock has released.

NOTE

- Always use the provided wrench to secure the bolt.
- Be careful because the bolt tightens to the left (counterclockwise direction) to prevent it from being loosened during cutting. (Fig. 6)

2. Removal

Remove the bolt with the provided wrench and remove the diamond wheel. (Fig. 6)

CUTTING

1. Wheel guard adjustment (Fig. 4)
Adjust the wheel guard angle with the knob so dust and debris from the material or sparks do not contact the operator during the cutting operation.

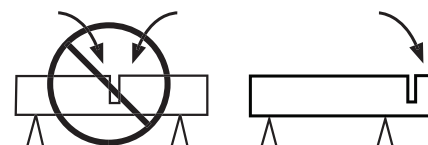
2. Cutting Procedures.

- (1) Place this tool on the material to be cut and align the premarked line and the diamond wheel. The cutting can be performed smoothly if you cut straight ahead on the scribed line in the initial cut.

- (2) Turn on the switch when the diamond wheel is not touching the material to be cut.

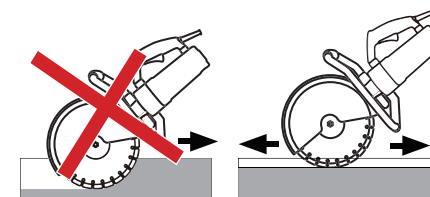
CAUTION

- Always check the diamond wheel before starting work. Never use a diamond wheel which is cracked, broken or bent.
- Do not apply water or coolant to the diamond wheel.
- Start cutting only when diamond wheel reaches its maximum speed.
- If the diamond wheel seizes or there is any abnormal noise, immediately turn the power off.
- Never use the diamond wheel to cut zig zag or curved lines. Never use the side surface of the diamond wheel. Never use to perform inclination cutting.
- If excessive force is applied to the diamond wheel to make it align with the premarked line during cutting, this might not only overload the motor and cause burn damage but may also overheat the diamond wheel and shorten the service life.
- Take care not to allow the power cord to come into contact with the diamond wheel during operation.
- When the work is completed, turn the power off and disconnect the power plug from the receptacle.
- Support the work piece in such a way that it is possible to predict what will happen, and so that the cut remains open while cutting.



- Check that the blade is not in contact with anything when the machine is started.
- Always cut at the maximum speed.
- Start cutting smoothly, allowing the machine to work without forcing or pressing the blade.
- Move the blade slowly forwards and backwards to achieve a small contact area between the blade and the material to be cut. This reduces the temperature of the blade and ensures effective cutting.

DISC CUTTER



- Feed down the machine in line with the blade. Pressure from the side can damage the blade and is very dangerous.



MAINTENANCE SECTION GB

1. Inspection the diamond wheel

A worn diamond wheel overloads the motor and reduces working efficiency. Replace with a new one.

2. Inspecting the mounting screws

Regularly inspect all mounting screws and ensure that they are properly tightened. Should any of the screws be loose, retighten them immediately. Failure to do so could result in serious hazard.

3. Maintenance of the motor

Exercise due care to ensure the winding does not become damaged and/or wet with oil or water.

4. Keep tool clean and free from debris

Avoid using cleaning products, which include benzene, trichloroethylene, chloride, or ammonia as these can damage plastic parts.

5. In case of electrical or mechanical malfunction, immediately switch off the tool and disconnect the plug.

6. Excessive sparking may indicate the presence of dirt in the motor or worn out carbon brushes. Check for wear and replace when they reach 1/4" (6mm).

7. For all other service take machine to your local dealer or at Power Tools USA, Iowa, if bought in the USA.