



Solutions Provider For Industry & Trade

Polymak Tools(India)Pvt.Ltd

186/187, P.H Road,Alsa Towers,Kilpauk,
Chennai – 600 010,
Tel. : +91–44–48631869
E–mail : info@polymak.co.in
Visit us at : www.polymak.co.in



Solutions Provider For Industry & Trade

CORDLESS TILE MACHINE

PM-CTM-8.4V

INSTRUCTION MANUAL



Read and follow all safety precautions in instruction manual.

Instruction Book

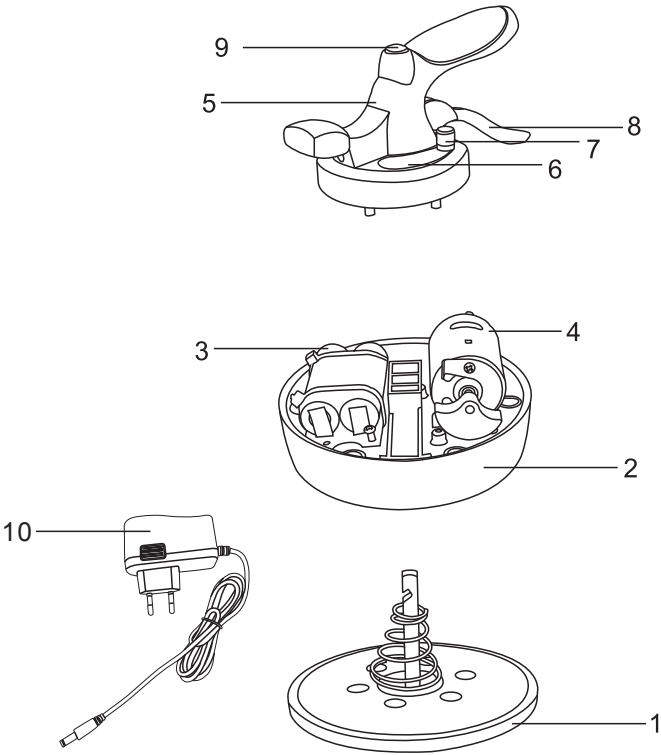
Parameter :
Batter Capacity: 8.4V LI-ion-2.5AH
Charging Current: 1A
Charging time : 2.0H
Adsorption Capacity : 25±KG

- Notes:
- 1. The machine must be stored in dry place .
 - 2. Remove any dirt or dust from the surface of the machine after use.
 - 3. Store the machine in the carry case supplied to avoid damage.
 - 4. During frequent use it is recommended to recharge the machine daily. It is also advisable to recharge it at least once a month if not used for long periods of time.

- Usage:
- 1. It is recommended to check the charge indicator before use to ensure that the battery is fully charged.
 - 2. Press the power button to start the machine and adjust the vibration frequency according to the demand.
 - 3. Place the machine on the tile to be laid, press the handle to activate the suction cup, lift the tile and apply it to the adhesive surface and then activate the vibration .
 - 4. After one minute of non-use the machine will switch off in order to conserve the battery, press the button again to restart it

Charging instructions:
If the indicator is yellow or red, recharge. The machine will be fully charged in 2 hours,at the end the indicator will turn green to indicate full charge (the red color indicates the charge in progress). The machine will automatically turn off when fully charged.

TILE TILING MACHINE



1	SUCTION PAD	6	PCB
2	PLASTIC SHELL	7	SPEED CONTROL
3	BATTERY SET	8	PLASTIC HANDLE
4	MOTOR	9	SWITCH
5	PLASTICE SHELL	10	CHARGER