

Polymak

Polymak Tools(India)Pvt.Ltd

186/187, P.H Road,Alsa Towers,Kilpauk,
Chennai – 600 010,

Tel. : 1800-309-4535

E-mail : info@polymak.co.in

Visit us at : www.polymak.co.in

Polymak

ELECTRIC IMPACT WRENCH

INSTRUCTION MANUAL

PM22EIW



Read and follow all safety precautions in instruction manual

- d. Do not abuse the cord. Never use the cord for carrying , pulling or unplugging the power tool.
Keep cord away from heat, oil, sharp edges or moving parts.
Damaged or entangled cords increase the risk of electric shock.
- e. When operating a power tool outdoors, use an extension cord suitable for outdoor sue.
Use of a cord suitable for outdoor use reduces the risk of electric shock.
- f. If operating a power tool in a damp location is unavoidable, use a residual current device (RCD) protected supply.

3. Power tool use and care

- a. Do not force the power tool. Use the correct power tool for your application.
The correct power tool will do the job better and safer at the rate for which it wats designed.
- b. Do not use the power tool if the switch does not turn it on and off.
Any power tool that cannot be controlled with the switch is dangerous and must be repaired.
- c. Disconnect the plug from the power source and/or the battery pack from the power tool before making any adjustments ,changing accessories, or storing power tools.
Such preventive safety measures reduce the risk of starting the power tool accidentally.
- d .Store idle power tools out of the reach of children and do not allow persons unfamiliar with the power tool or these instructions to operate the power tool.
Power tools are dangerous in the hands of untrained users. Maintain power tools. Check for misalignment or binding of moving parts, breakage of parts and any other condition that may affect the power tool's operation.If damaged, have the power tool repaired before use.
Many accidents are caused by poorly maintained power tools.


- e. Keep cutting tools sharp and clean.
Properly maintained cutting tools with sharp cutting edges are less likely to bind and are easier to control.
- f. Use the power tool, accessories and tool bits etc. In accordance with these instructions, taking into account the working conditions and the work to be performed.
Use of the power tool for operations different from those intended could result in a hazardous situation.

4. Service

- a. Have you power tools serviced by a qualified repair person using only dential replacement parts.
This will ensure that the safety of the power tool is maintained.

SAFETY RULES ELECTRIC WRENCH

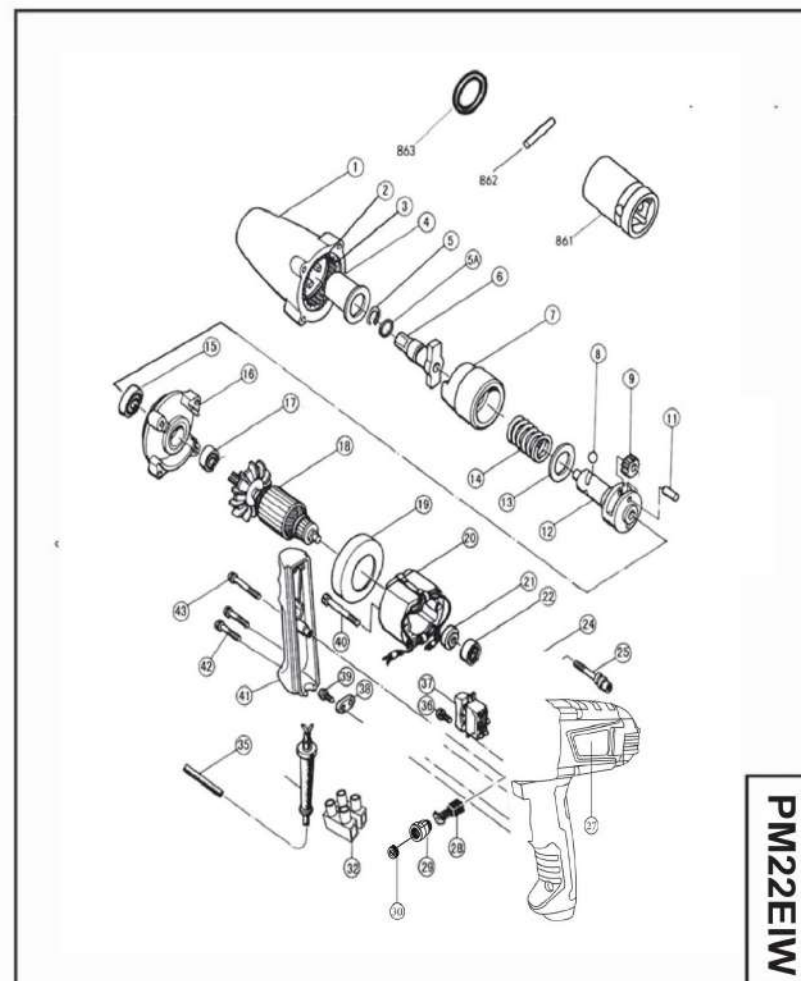
1. Use only the voltage shown on the nameplate to supply power.
Using a voltage higher than shown will increase the rotation speed abnormally and can cause injuries.
2. Hold tool by insulated gripping surfaces when performing an operation where the cutting tool may contact hidden wiring or its own cord. Contact with a live wire will make exposed metal parts of the tool live and shock the operator. If cutting into existing walls or other blind areas where electrical wiring may exist is unavoidable.
Disconnect all fuses or circuit, breakers feeding this worksite.
3. Always make sure the work surface is free from nails& other foreign objects, Cutting into a nail can cause the bit and the tool to jump and damage the bit.
Never hold the work piece in one hand and the tool in the other hand when in use.
Never place hands near or below cutting surface. Clamping the material and guiding the tool with both hands is safer.
4. Remove this unit a safe distance away from electrical conductors when cleaning sections carrying electrical power such as the electrical panel.

- 
5. Do not sue in locations where inflammable materials such as lacquer, paint, benzene, thinner or gasoline are present.
Also do not let items such as lighted cigarette butts be suctioned inside at such locations. Explosion or fires might result.
 6. Do not use in environments subject to heavy doses of chemicals, etc.
Plastic sections such as the vanes on the inner section of the unit might weaken and break, and injuries might occur.
 7. If you notice the unit is operating poorly or making abnormal noises, immediately stop using and shut off the power switch.
Request an inspection and repair from the dealer where you purchased the unit.
Continuing to use while operating abnormally might cause injuries.
 8. If the unit is mistakenly dropped or strikes another object, make a thorough check of the unit for cracks, breakage or deformation, etc. Injuries might occur if the unit has cracks, breakage or deformation.
 9. Do not use near objects generating high heat such as stoves.
Fires might occur if used near such locations.
 10. Do not leave on locations such as benches or floors while still rotating. Injuries might occur.

Specifications:

Voltage	220V
Rated Power Input	700W
No-load Speed	1800r/min
Capacities(Bolt Size)	M16-22mm
Impacting Frequency	0-2200IPM
Square Drive	12.7x12.7mm
Max.Fastening Torque	250N.m

Exploded view for PM22EIW



PM22EIW

EXPLANATION OF GENERAL VIEW

No	Parts Name	Pcs	Seri No	INR	No	Parts Name	Pcs	Seri No	INR
1	Gear box				42	Screw			
2	Internal gear				43	Screw			
3	Pin for Gear				862	Socket Pin			
4	Shaft Sleeve				863	O Ring			
5	Ring spring				861	Socket			
5A	Spindle Gasket								
6	Anvil								
7	Hammer								
8	Steel Ball 6.4								
9	Spur gear								
11	Pin 6								
12	Spindle								
13	Cup washer 19								
14	Compression Spring								
15	Bearing 608								
16	Middle cover								
17	Bearing								
18	Armature								
19	Baffle plate								
20	Stator								
21	Insulation washer								
22	Bearing								
27/41	Housing								
25	Screw								
26	Name plate								
28	Carbon brush								
29	Brush Holder								
30	Brush Cover								
32	Pan Head Tapping Screw								
35	Cable								
36	Screw								
37	Switch								
38	Strain relief								
39	Screw								
40	Screw								
41	Handle Cover								