

Polymak[®]

Solutions Provider For Industry & Trade

ELECTRIC SPRAY GUN

PM40ESG-DY

INSTRUCTION MANUAL



Read and follow all safety precautions in instruction manual.

PRODUCT DESCRIPTION

- **PATENTED Detachable Sprayer Gun:** Making it easy to use and clean.
- **PATENTED Dual-Flow-Path Structure:** Superior performing to provide a fine finish on furniture, walls, ceilings, exterior siding, fences, cabinets, trim and more
- **Three Spray Patterns with a copper nozzle:** Turn the air cap to spray round, horizontal, or vertical to suit the shape of the object you're spraying
- **Efficient Coverage:** Adjust the material volume to reduce or increase the stain flow to improve the covering efficiency.
- **Spray any type of paint** (oil based or water based or others)
- **Upgrade 400W to make your spraying project more extensive:** All-copper high-power motor, powerful spray and more durable.



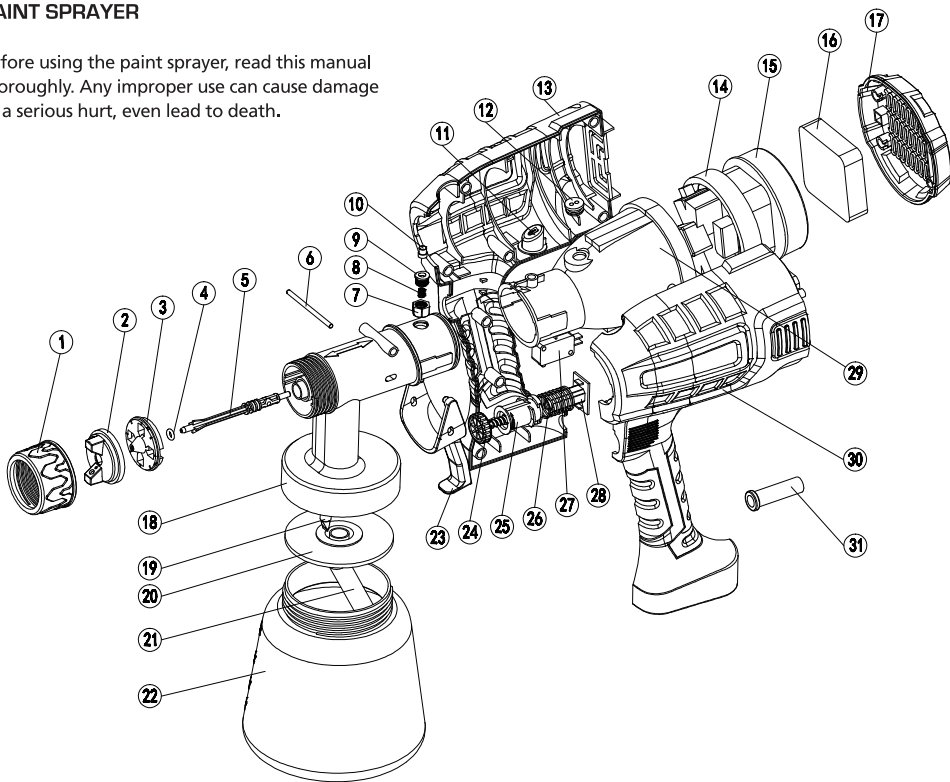
PM40ESG-DY ELTCTRIC SPRAY GUN

Air Pressure:	0.1-0.2Bar
Max Viscosity:	80DIN-s
Nozzle Size:	2.5mm
Paint Cup Capacity:	1000ml



INSTRUCTIONS FOR HVLP ELECTRIC PAINT SPRAYER

Before using the paint sprayer, read this manual thoroughly. Any improper use can cause damage or a serious hurt, even lead to death.



1. EXPLOSIVE VIEW

Serial No.	Name	qty	Material
1	BIG NUT	1	PP
2	NOZZLE REGULATION RISER	1	PP
3	NOZZLE	1	POM
4	SEALING RING	2	RUBBUR
5	STEAM OUTLET	1	POM
6	LIMIT ROD	1	SS304
7	PLASTIC NUT	1	POM
8	SPRING	1	SPRING STEEL
9	FIX COVER	1	POM
10	FIX BOSS	1	SS304
11	KEY	1	PP
12	MOTOR COVER SEAL	1	RUBBUR
13	RIGHT ENCLOSURE	1	PP
14	MOTOR RUBBER RING	1	RUBBUR
15	MOTOR	1	CUPPER
16	FILTER	1	FOAM
17	BACK COVER	1	PP
18	Hair dryer	1	PP
19	Check valves	1	RUBBUR
20	SEALING PAD	1	EVA
21	trachea	1	PP
22	POT	1	PE
23	trigger	1	PP
24	ADJUSSTABLE NUT	1	PP
25	GUIDE GOD	1	PP
26	SPRING	1	SPRING STEEL
27	SWITCH	1	ABS
28	FLOW ADJUSTABE FIXTION	1	PP
29	MOTOR COVER	1	PP
30	LEFT ENCLOSURE	1	PP
31	FLEXIBLE CORD	1	TPE

2. BEFORE THE FIRST USE

Remove the machine and all accessories from the package. Keep the packaging material out of the reach of small children. There is a danger of suffocation.

3. CONTENTS OF PACKING

1pc Electrical spray gun	1pc 2.5mm copper nozzle(assembled on machine)
1pc cleaning needle	1pc cleaning brush
2pc paper filter	1pc viscosity measuring cup
1pc instruction manual	

4. TECHNICAL PARAMETERS

MODEL NO.	PM40ESG-DY	MAX. FLOW	800ml/min
RATED POWER	400W	SPRAY DISTANCE	200-300mm
RATED VOTAGE	230V	WIDTH	200-300mm
FREQUENCY	50Hz	VISCOSITY (MAX.)	80din/sec
RATED SPEED	32000 RPM	PAINT TANK CAPACITY	1000ml
AIR FLOW	0.2-0.4Bar	WIRE LENGTH	1.5m

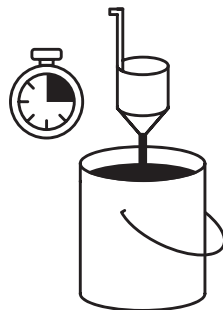
5. FUNCTION

Suitable for painting furniture, fences, doors, windows, walls, ceiling, and for car repairing, high altitude operation and so on.

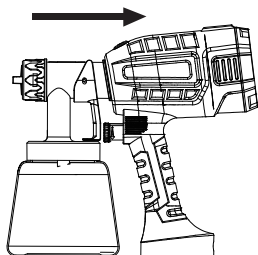
6. HOW TO USE

Before using the electric paint sprayer, material preparation is the first stage. Please refer to the thinning chart and picture.

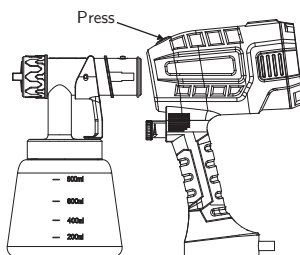
MATERIAL	RUN OUT TIME (sec)
1) OIL ENAMEL	25-60
2) OIL BASED PRIMER	30-60
3) OIL STAIN	NO THINNING REQUIRED
4) CLEAR SEALER	NO THINNING REQUIRED
5) POLYURETHANE	NO THINNING REQUIRED
6) VARNISH	20-60
7) LACQUER SANDING SEALER	25-35
8) LACQUER	25-35
9) AUTOMOTIVE FINISHES	20-40
10) LATEX	25-40



1) Setup the unit. Insert the sprayer body into the motor housing until a "click" sound.



2) Unscrew the paint container from the paint sprayer.



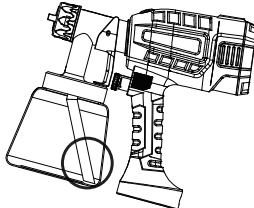
3) Pour material into container, make sure not to exceed 1000ml



4) Adjust the suction tube.

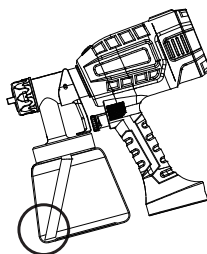
a) If spray in an upward direction, the angled end of the suction tube should be pointing toward the rear of the paint sprayer.

Adjust the tube end towards the rear of the tank as picture

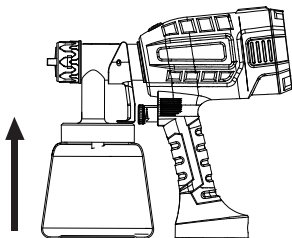


b) If spray in a downward direction, the angled end of the suction tube should be pointing towards the front of the paint sprayer.

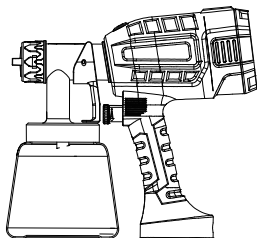
Adjust the tube end towards the front of the tank as picture



4) Connect the tank to the unit in clockwise rotation by hand.

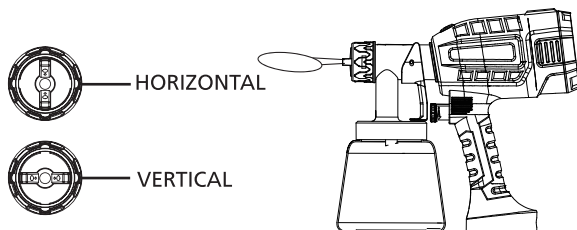


5) Variable flow rate trigger switch. Rotate trigger screw to adjust the flow rate.



6) Spray direction adjustment

Turn this knob to adjust the shape from vertical to horizontal.
Adjust the required length according to the spraying environment, reduce waste and save material.



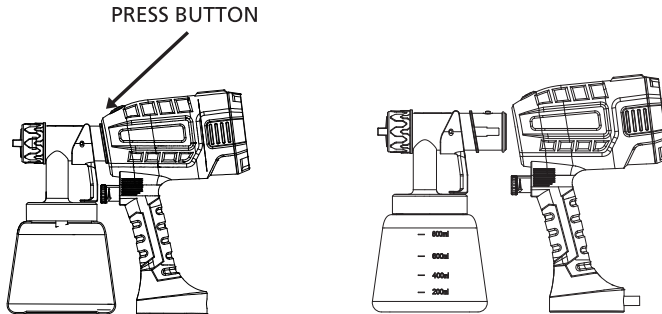
7) Open the power switch, pull trigger, the paint will spray from the nozzle.

7. HOW TO SPRAY PROPERLY

Apply an even coat throughout the surface.

8. REMOVE THE MOTOR

- a) Hold the sprayer with your hand and press the button
- b) Pull out to remove the motor from the sprayer.

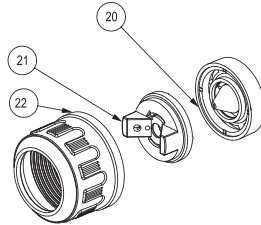


9. CLEANING THE SPRAYER GUN

Special cleanup instructions for use with flammable solvents(must have a flash point above 70 °F/21°C):

- 1)Always flush sprayer gun outside.
- 2)Area must be free of flammable vapors.
- 3)Cleaning area must be well-ventilated.
- 4)DO NOT SUBMERGE air compressor.
- 5)Unplug the sprayer gun and trigger the sprayer gun so that the material inside the sprayer flows back into container.
- 6)Unscrew the container. Empty any remaining material back into the material container.
- 7)Pour a small amount of the appropriate cleaning solutioninto the container(warm soapy water for latex materials, mineral spirits for oil-based materials). Clean container and property dispose of cleaning solution.
- 8)Refill the container with NEW cleaning solution.
- 9)Refill the container to the gun and plug in the sprayer.
- 10)Spray the solution through the gun for two seconds in a safe area. Spray again for two seconds. Unplug the spray gun, and trigger the spray gun so that the material inside the spray gun flows back into the container.
- 11)Wipe the exterior of the container and gun until clean.

12) Unscrew the big nut(22) and remove the nozzle regulation riser(21) and nozzle(20).



Clean the container, suction tube, air cap and nozzle with a cleaning brush and the appropriate cleaning solution.

Never clean nozzle or air holes in the spray gun with sharp material objects.

10.WARNING!

- Keep your workplace clean and tidy, never use the tool in hazardous areas that contain flammable liquids, gasses or dusts.
- Only use paints, solvents or other materials with a flash point of 73°F(22°C) or higher.
- Never point the paint sprayer at another person or an animal.
- In the event of an injury, seek immediate medical attention.
- Always read the paint manufacturer's thinning instructions before use.
- You must clean the paint sprayer thoroughly after each use.
- Do not pull the power cord to move this tool.
- Empty the tank after use before storage.
- Keep the unit stand when break time, never lay it down for long time.

11.TROUBLESHOOTING

Problem Cause Solution

PROBLEM	CAUSE	SOLUTION
LITTLE OR NO MATERIAL FLOW	NOZZLE CLOGGED	CLEAN
	SUCTION TUBE CLOGGED	CLEAN
	MATERIAL VOLUME SETTING TURN TOO FAR TO THE RIGHT	TURN TO THE LEFT
	SUCTION TUBE LOOSE	INSERT
	MATERIAL IS TOO THICK	CHECK VISCOSITY
	INCONSISTENT PAINT	STRAIN PAINT
	CONTAINER IS LOOSE	TIGHTEN THE CONTAINER
ATOMIZATION IS TOO COARSE	VISCOSITY OF MATERIAL TOO HIGH	THIN
	MATERIAL VOLUME TOO LARGE	TURN TO THE RIGHT
	NOZZLE CLOGGED	CLEAN
	TOO LITTLE PRESSURE BUILD-UP IN CONTAINER	TIGHTEN CONTAINER
SPRAY JET PULSATES	MATERIAL IN CONTAINER RUNNING OUT	REFILL
	MATERIAL IS TOO THICK	CHECK VISCOSITY
PATTERN RUNS OR SAGS	APPLYING TOO MUCH MATERIAL	ADJUST MATERIAL FLOW OR INCREASE MOVEMENT OF PAINT SPRAYER
TOO MUCH OVER-SPRAY	SPRAYER IS TOO FAR FROM SPRAY	REDUCE DISTANCE
	TOO MUCH MATERIAL APPLIED	TURN MATERIAL VOLUME SETTING TO RIGHT
PATTERN IS VERY LIGHT AND SPLOTCHY	MOVING THE PAINT SPRAYER TOO FAST	ADJUST MATERIAL FLOW OR DECREASE MOVEMENT OF PAINT SPRAYER
LARGE CLOUD OF PAINT	SPRAYER IS TOO CLOSE TO SURFACE	MOVE PAINT SPRAYER AWAY FROM SURFACE AND REDUCE PAINT FLOW



Solutions Provider For Industry & Trade

Polymak Tools(India)Pvt.Ltd

186/187, P.H Road,Alsa Towers,Kilpauk,
Chennai – 600 010,

Tel. : +1800–309–4535

E–mail : info@polymak.co.in

Visit us at : www.polymak.co.in