



BRUSH CUTTER PMBC-52

INSTRUCTION MANUAL



Polymak Tools(India)Pvt.Ltd

186/187,P.H Road, Alsa Towers,Kilpauk
chennai-600 010,

Tel. :+91-44-48631869

E-mail :info@polymak.co.in

Visit us at :www.polymak.co.in

Caution	Before using our brush cutter ,please read this manual carefully to understand the proper use of your unit.Keep this manual handy.
WARNING	Read and follow all safety precautions in the instruction manual.Failure to follow instructions could result in serious personal injury

DESCRIPTION OF THE SYMBOLS

The use of symbols in this manual is intended to draw your attention to possible risks. The safety symbols and the explanations that accompany them must be perfectly understood. The warnings in themselves do not remove the risks and cannot replace correct actions for preventing accidents.



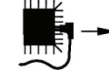
This symbol, before a safety comment, indicates a precaution, a warning or a danger. Ignoring this warning can lead to an accident for yourself or for others. To limit the risk of injury, fire, or electrocution always apply the recommendations indicated.



Before any use, refer to the corresponding paragraph in the present manual.



Complies with European regulations applicable to this product..



Remove the ignition cable before all maintenance work, and read the instructions for use.



Take care of the proportion when handling fuel and lubricants!



Don't expose to rain.



The exhaust and exhaust gases are hot



Danger of injury from flying parts! Always maintain a sufficiently safe distance. Beware of thrown objects. The distance between the machine and bystanders should be at least 15 meters



Start engine creates sparking.
Sparking can ignite nearby flammable gases.



Engines give off carbon monoxide, an odorless, colorless, poison gas.
Breathing carbon monoxide can cause nausea, fainting or death.



For outdoor use only



Strictly no naked flames or smoking near the appliance!



These symbols indicate the requirement of wearing ear protection, eye protection and gloves when using the product.



Wear robust footwear when using the device.



Push the bubble 10 times before use to make sure the petroleum spirit full of the oil way



Choke closed



Choke open



Beware of blade thrust

MAINTENANCE should be carried out at REGULAR INTERVALS in each of the indicated months or after a certain number of hours of operation (whichever comes first). (1)		Before use every time	Monthly or after 25 hours	Every three months or after 50 hours	Every six months or after 100 hours
Air filter	Clean			X(1)	
Valve-clearance	Check – Clean				X(2)
Fuel tank and filter	Clean				X(2)
Grease inside gear box	Filling			X(1)	
Blade	Check (replace if necessary)	X		X	
Fuel feed line	Check (replace if necessary)	Every three years (2)			

(1) If operated in dusty areas carry out maintenance more frequently.

(2) A specialist technician should carry out this maintenance if the owner does not have the appropriate tools or mechanical knowledge.

STORING

Transporting the machine in a car, please empty the fuel tank completely first to avoid the leakage.

Empty the fuel

1. Place the machine on even and stable surface. Warm up the engine for several minutes and then stop it.
2. Loosen the fuel tank cover and remove it.
3. Drain fuel into a container thoroughly.
4. Press the intake pump several times until fuel begins to empty the bulb.
5. Drain fuel again.
6. Reinstall the fuel tank cover.

Store the machine, operating instructions and where necessary the accessories in the original packaging. In this way you will always have all the information and parts ready to hand. Pack the device well or use the original packaging in order to avoid transit damage.

Transport and storage the machine, use protective gloves when handling the blades. Keep the blade protection device on, except when intervening directly on the blade.

Store the machine in dry and well ventilated surroundings and with the fuel tank empty. Do not store fuel next to the machine.

Repairs

Only an authorized service centre should repair the machine.

Problem	Check	Condition	Cause	Solution
The engine stalls, is difficult to start or does not start	Fuel at the carburetor	The fuel does not arrive at the carburetor	Fuel filter blocked	Clean or replace
			Fuel supply blocked	Clean or replace
			Carburetor	Ask your distributor for advice
	Fuel at the cylinder	The fuel does not arrive at the cylinder	Carburetor	Ask your distributor for advice
		There is fuel in the exhaust	The fuel mixture is too rich	Open the throttle valve Clean or replace the air filter Adjust the carburetor Ask your distributor for advice
	Sparks at the spark plug electrodes	There is no spark	Switch in off position	Set the switch to the ON position (Run)
			Electrical problem	Ask your distributor for advice
			Locked switch	
	Sparks at the spark plug	There is no spark	Bad spacing of the electrodes	Adjust the gap to 0,6-0,7 mm
			Electrodes contaminated	Clean or replace
			Electrodes contaminated with fuel	Clean or replace
			Defective spark plug	Replace the spark plug
The engine turns, but stalls or does not accelerate correctly	Air filter	Dirty air filter	Fair wear and tear	Clean or replace
	Fuel filter	Dirty fuel filter	Dirt or residue in the fuel	Replace
	Fuel vent	Blocked fuel vent	Dirt or residue in the fuel	Clean or replace
	Spark plug	Dirty or worn spark plug	Fair wear and tear	Clean, adjust or replace
	Carburetor	Bad adjustment	Vibration	Adjust
	Cooling system	Excessive	Prolonged use in dirty or dusty places	Clean
	Spark suppressor	Plate cracked, contaminated or perforated	Fair wear and tear	Replace
The engine does not engage	N/A	N/A	Internal engine problem	Ask your distributor for advice

SAFETY WARNINGS

The machine shall always be used in accordance with the manufacturer's instructions laid down in the instruction handbook.

The manufacturer will not be liable in cases of inappropriate use or modifications of the appliance. Also, follow the safety advice, the installation and operation manual and also to the valid accident prevention regulations.

Appliances with incorrect or missing parts or without a security case are not to be operated. The service centre provides you with information concerning replacement parts.

1). Training

- Read the instruction carefully. Be familiar with the controls and proper use of the equipment.
- Never allow children or people unfamiliar with these instructions to use the machine. Local regulations can restrict the age of the operator.
- Never work while people, especially children, or pets are nearby.
- keep in mind that the operator or user is responsible for accidents or hazards occurring to other people or their property.
- Major repair work shall be carried out only by specifically trained personnel.
- All persons and animals must be kept at least 15 meters from the machine while it is working

2). Preparation

- WARNING-Petrol is highly flammable:
 - store fuel in containers specifically designed for this purpose;
 - refuel outdoors only and do not smoke while refueling;
 - add fuel before starting the engine. Never remove the cap of fuel tank or add petrol while the engine is running or when the engine is hot;
 - if petrol is spilled, do not attempt to start the engine but move the machine away from the area of spillage and avoid creating any source of ignition until petrol vapors have dissipated;
 - replace all fuel tank and container caps securely.
- Replace faulty silencers;
- Before using, always visually inspect to see that the tools are not worn or damaged. Replace worn or damaged elements and bolts in sets to preserve balance.
- Do not smoke near the machine.
- Do not wear loose clothing, jewellery, or similar items that could be caught in the starter or other moving parts.
- Never put any items into the ventilation openings. Non-observance may lead to injury, or damage to the machine.
- It is necessary reduction in power due to use in higher temperatures, altitudes and humidity as below conditions.
 - Max Working Temperature: 40°C
 - Max altitudes: 1000 m
 - Max humidity: 95%

3). Operation

- Do not operate the engine in a confined space where dangerous carbon monoxide fumes can collect
- Keep the machine free of oil, dirt and other impurities.
- Please always place the appliance on even and stable surfaces.
- Never operate the appliance inside buildings or in an environment without proper ventilation. Pay attention to air flow and temperature.
- Do not operate or store the appliance in wet or humid surroundings.
- Ensure the sound absorber and air filter work properly. These parts serve as flame protection in case of misfire.
- To avoid possible burn injuries, do not touch the exhaust system or other parts that become hot during operation. Pay attention to the warnings on the machine.
- The engine must not be operated with excessive rotary speed. The operation of the engine with excessive rotary speed raises the risk of injury. Parts which affect the rotary speed must not

be altered or replaced.

i). Regularly check for leakage or traces of abrasion in the fuel system, such as porous pipes, loose or missing clamps and damage to the tank or tank cap. Before use all defects must be repaired.

j). Work only in daylight or in good artificial light.

k). Never pick up or carry a machine while the engine is running

l). Stop the engine:

- whenever you leave the machine

- before refueling

m). Before checking or adjusting the machine, the ignition plug and the ignition wire respectively must be removed to prevent accidental starting.

n) Do not use of the machine when the operator is tired, ill or under the influence of alcohol or the drugs.

o) Comply with local regulations to use the brush cutter.

p) Contact your local government offices for information regarding minimum age requirements for operating the equipment.

q) Wear safety goggles and ear protection. Other safety equipment for the hands, legs and feet is recommended. Correct safety equipment reduces the risk of injury caused by catapulted foreign bodies or in the event of accidental contact with the brush cutter.

r) Ensure that you maintain a steady foothold. Only use the brush cutter on flat surfaces where you have a firm footing.

s) While working, always wear substantial footwear and long trousers. Do not operate the equipment when barefoot or wearing open sandals. Always keep proper footing and operate the brush cutter only when standing on fixed, secure and level surface.

t) Always hold the brush cutter with you right hand on the trigger and left hand on handle in wrong positions increases the risk of injury and must therefore be avoided.

u) Always use the harness when operate the tool, and adjust the length of the harness to ensure it is suitable for operation.

v) Always use the correct blade and spool recommended by the manufacturer.

w) Take care against injury to feet and hands from the cutting means.

x) Always ensure that the ventilation openings are kept clear of debris

4). Maintenance and storage

a). Keep all nuts and screws tight to be sure the equipment is in safe working condition.

b). Never store the equipment with petrol in the tank inside a building where fumes can reach an open flame or spark.

c). Allow the engine to cool before storing in any enclosure.

d). To reduce the fire hazard, keep the engine, silencer and petrol storage area free of vegetative material and excessive grease.

e). Replace worn or damaged parts for safety.

f). If the fuel tank has to be drained, this should be done outdoors.

g). Always clean and maintenance before storage.

h). Never disassembly the guards for cutting attachments.

i). Always store the metal blade in cool and dry place, never use rusted blade. It may cause serious injury during working.

5) TRANSPORTATION AND HANDLING

a) Whenever the machine is to be handled or transported you must:

-turn off the engine, wait for the cutting device to stop and disconnect the spark plug cap;

-fit the cutting device guard;

-use protective gloves when handling the blades.

-Keep the blade protection device on.

-only hold the machine using the handgrip s and position the cutting device in the opposite direction to that used during operation.

b) When using a vehicle to transport the machine, position it so that it can cause no danger to persons and fasten it firmly in place to avoid it from tipping over, which may cause damage or fuel spillage.

Cleaning

1. Keep your machine clean, the outside of the machine can be cleaned using a damp soft cloth with a mild detergent if required, never use water to clean the machine as it may cause damage to internal parts.

2. Some maintenance products and solvents may damage the plastic parts, these include products containing benzene. Trichloroethylene, chloride and ammonia.

3. Take special care to keep the ventilation inlets /outlets free from obstruction. Cleaning with a soft brush followed by a compressed air jet will usually be sufficient to ensure acceptable internal cleanliness.

4. Wear eye protection when carrying out cleaning.

Adjusting of carburetor

The carburetor governs the engine's speed via the throttle control. Air and fuel are mixed in the carburetor. The air/fuel mixture is adjustable. Correct adjustment is essential to get the best performance from the machine.

Adjusting the carburetor means that the engine is adapted to local operating conditions, e.g. climate, altitude, petrol and the type of 2-stroke oil.

The engine has been tested in the factory with initial adjustment. The user need not adjust the carburetor.

To ensure that it continues to run at peak performance and to minimize harmful exhaust emissions after the running-in period, please always contact the authorized service to adjust the carburetor.

Adjusting of idle speed

A screw just behind air filter cover regulates the throttle setting at idle speed. The user can adjust the idle speed, if it's necessary.

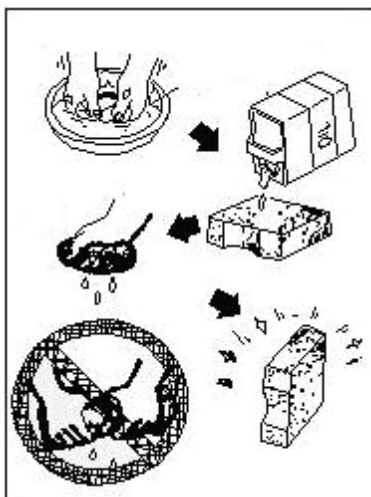
Before any adjustment, make sure that the air filter is clean and the air filter cover is fitted.

Turn the screw clockwise can give a higher idle speed; turning it anti-clockwise gives a lower idle speed.

The idle speed is correctly adjusted when the engine runs smoothly in every position. There should also be a clear margin to the speed at which the blades start to move. The blades must also remain stationary when the choke control is in the start throttle position.

Screw





4. Reinstall the air filters.
5. Reinstall the air filter cover, and tighten the air filter cover screw.

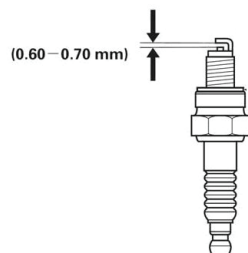
WARNING:

The use of petrol or combustible solvents for cleaning can cause fire or explosion. Therefore only use soap water or non-combustible solvent. Never operate the machine without the air filter.

SPARK PLUG

To ensure proper engine operation, the spark plug must be properly gapped and free of deposits.

1. Remove the spark plug cover from the housing.
2. Remove the spark plug cap.
3. Clean any dirt from around the spark plug base.
4. Use the socket spanner which provided to remove the spark plug.
5. Visually inspect the spark plug. Remove carbon deposits using a wire brush.
6. Check for discoloration on the top of the spark plug. The standard color should be a tan color.
7. Check the spark plug gap. The acceptable gap should be between 0,6-0,7mm.



8. Install /reinstall the spark plug carefully by hand.
9. Once the spark plug has been seated, tighten it with a spark plug wrench.
10. Reinstall the spark plug cap on top of the spark plug.
11. Reinstall the spark plug cover.

INTENDED USE

This unit is designed to be used in accordance with the descriptions and safety instructions indicated in this operating manual

- for private use
- for trimming lawn edges and small inaccessible areas of grass (e.g. under bushes)
- for cutting wild growth, shrubs and undergrowth.

It is not permitted to use this unit for any other purposes.

The user is liable for all injuries to third parties and damage to their property.

Operate the unit only in the technical condition as stipulated and delivered by the manufacturer.

Arbitrary changes to the unit will exclude the manufacturer from any liability for resulting injury and/or damage.

TECHNICAL SPECIFICATIONS

Model:	PMBC-52
Empty tanks without cutting attachment	4.5KGS
Volumes of fuel tank	1200CM ³
Engine model	1E44F-5
Engine type	Air Cooling, Single Cylinder, 2-Stroke
Engine Displacement	52cc
Type of aluminium pole	28mm, the whole straight Alu.
Max engine speed for cutting blade	9500r/min
Max engine speed for grass trimmer head	8500r/min
Gear Ratio	19:16
Cutter diameter of blade	255mm(3T)
Cutter diameter of trimmer head	430mm
Rotation direction of cutting device	Counter-clockwise(see from the top)
Engine idling speed	2800-3200r/min
Clutch engagement speed	4000-4500r/min
Max output power of engine	1.4kw
Fuel consumption at max engine power	610g/h
Fuel ratio	Gasoline mixed with 2 cycle oil 25:1
Carburetor	Diaphragm-type (WALBRO)
Spark plug	LD
Carrying type	side-attached

Noise Information

Measured sound values determined according to ISO 11806-1:2011..

The noise figures quoted are emission levels and are not necessarily safe working levels. Whilst there is a correlation between the emission and exposure levels, this cannot be used reliably to determine whether or not further precautions are required. Factors that influence the actual level of exposure of work-force include the characteristics of the work room, the other sources of noise, etc. i.e. the number of machines and other adjacent processes, and the length of time for which an operator is exposed to the noise. Also the permissible exposure level can vary from country. This information, however, will enable the user of the machine to make a better evaluation of the hazard and risk.

Wear hearing protection!

Vibration total values (triax vector sum) determined according to ISO 11806-1:2011.:

The vibration emission level given in this information sheet has been measured in accordance with a standardized test given in ISO 11806-1:2011.and may be used to compare one tool with another. It may be used for a preliminary assessment of exposure.

The declared vibration emission level represents the main applications of the tool. However if the tool is used for different applications, with different accessories or poorly maintained, the vibration emission may differ. This may significantly increase the exposure level over the total working period. An estimation of the level of exposure to vibration should also take into account the times when the tool is switched off or when it is running but not actually doing the job. This may significantly reduce the exposure level over the total working period.

Identify additional safety measures to protect the operator from the effects of vibration such as: maintain the tool and the accessories, keep the hands warm, organization of work patterns.

Maintenance	Daily maintenance	Weekly maintenance	Monthly maintenance
Clean the outside of the machine.	X		
Make sure the throttle trigger lock and the throttle function correctly from a safety point of view.	X		
Check that the engine switch works correctly.	X		
Check that the blades do not move when the engine is idling or when the choke is in the start throttle position.	X		
Check that the blades are undamaged and show no signs of cracking or other damage. Replace the blades if necessary.	X		
Check that the blade guard is not damaged or distorted. Replace the blade guard if it is bent or damaged.	X		
Clean the air filter. Replace if necessary.	X		
Check that nuts and screws are tight.	X		
Check that there are no fuel leaks from the engine, tank or fuel lines.	X		
Check the starter and starter cord.		X	
Clean the outside of the spark plug. Remove it and check the electrode gap. Adjust the gap to 0.6-0.7 mm or replace the spark plug. Check that the spark plug is fitted with a spark plug cap.		X	
Clean the machine's cooling system.		X	
Clean the outside of the carburetor and the space around it.		X	
<u>Check the flange, cap and nut are assembled correctly and tightened</u>		X	
Clean the fuel tank.			X
Check all cables and connections.			X
Check the clutch, clutch springs and the clutch drum for wear. Replace if necessary by an authorized service workshop.			X
Replace the spark plug. Check that the spark plug is fitted with a spark plug cap.			X
To reduce the fire hazard, clean dirt, leaves and surplus lubricant, etc from the muffler and engine.			X

Air filter

1. Loosen the air filter cover screw and remove the air filter cover.
2. Wash the air filter in solvent.
3. Thoroughly squeeze the filter removing excess oil.

Kickback and Related Warnings

Kickback is a sudden reaction to a pinched or snagged rotating blade. Pinching or snagging causes rapid stalling of the rotating accessory which in turn causes the uncontrolled power tool to be forced in the direction opposite of the accessory's rotation at the point of the binding.

For example, if a blade is snagged or pinched by the stone, the edge of the blade that is entering into the pinch point can dig into the surface of the material causing the blade to climb out or kick out. The blade may either jump toward or away from the operator, depending on direction of the blade's movement at the point of pinching

Kickback is the result of power tool misuse and/or incorrect operating procedures or conditions and can be avoided by taking proper precautions as given below.

a) **Maintain a firm grip on the power tool and position your body and arm to allow you to resist kickback forces.**

b) **Never place your hand near the rotating accessory.** Accessory may kickback over your hand.

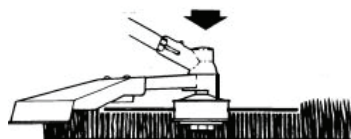
c) **Do not position your body in the area where power tool will move if kickback occurs.** Kickback will propel the tool in direction opposite to the wheel's movement at the point of snagging.

d) **Use special care when working corners, sharp edges etc. Avoid bouncing and snagging the accessory.** Corners, sharp edges or bouncing have a tendency to snag the rotating accessory and cause loss of control or kickback.

Extending the cutting line

WARNING: Do not use any kind of metal wire or metal wire encased in plastic in the cutting head. This may cause serious injuries to the user

To extend the cutting line run the motor at full speed and tap the cutting head on the ground. This will automatically extend the line. The cord cutter (21) under the cutting attachment guard (13) will cut the line to the appropriate length.



Stopping the engine

1. Reduce the engine speed and let it run with no load for a few minutes.
2. Switch off the engine by moving the engine switch to the stop position.

The accessory may cause an accident if it continues to turn after the engine has stopped or after the engine switch has been released. When the unit has stopped, check carefully that the accessory has stopped turning before putting the unit down.

MAINTENANCE

Good maintenance is essential for safe, economical and trouble-free operation. It will also help reduce air pollution.

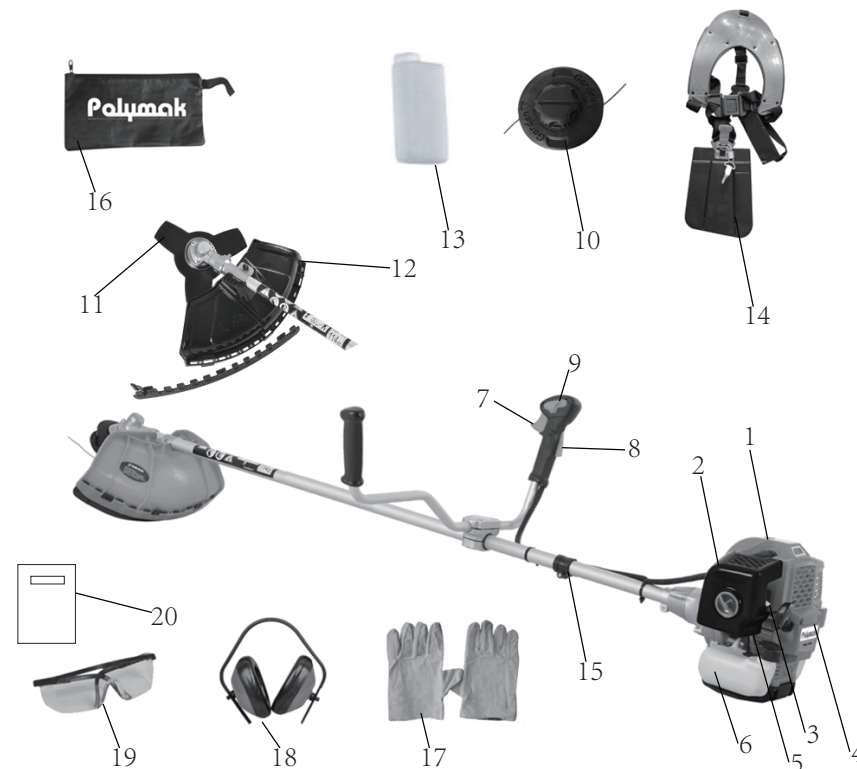
The purpose of the maintenance and adjustment schedule is to keep the machine in the best operating condition.

Turn off the engine before performing any maintenance. If the engine must be run, make sure the area is well ventilated. The exhaust contains poisonous carbon monoxide gas

Please always select recommended accessories. The accessories which have not equivalent quality may damage the machine.

Please never use non approved components and remove the safety devices after or during maintenance.

LIST OF MAIN PART



1. Spark plug	2. air filter
3. choke lever	4. recoil starter
5. Intake pump	6. Fuel tank
7. Throttle trigger	8. Throttle trigger lockout
9. Engine switch	10. Spool/wire assembly
11. Blade	12. Cutting attachment guard
13. Fuel mixture bottle	14. Luxury double harness
15. Suspension point	16. Tool Kits
17. Gloves	18. Ear protector
19. Goggles	20. Manual

ASSEMBLY

WARNING!

Please ensure that the brush cutter is switched off properly and that the engine has stopped completely before assembly and adjustment.

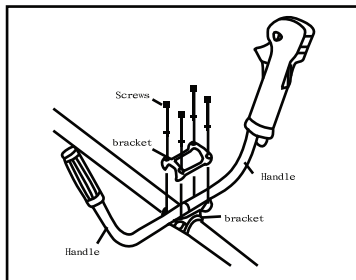


Fig.1-1

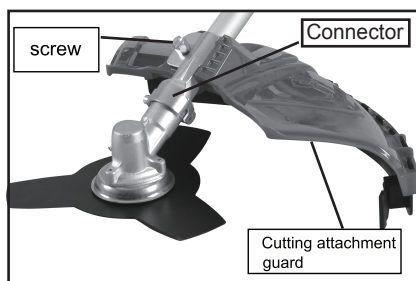


Fig.1-2

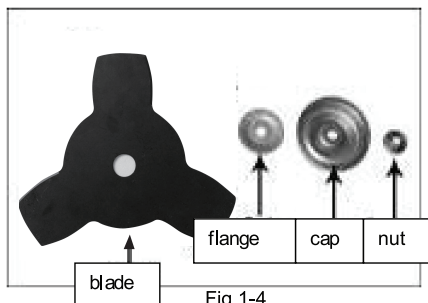


Fig.1-4

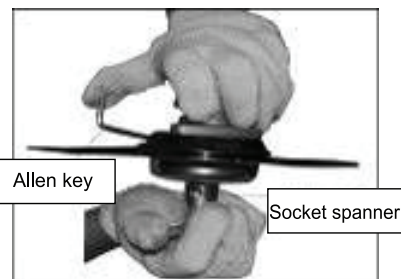


Fig.1-3



Fig.1-5

Assembly the handles (Fig.1-1)

CAUTION!

Do not tighten the screws until you have set the handle in optimal working position. Please always adjust the handle position with full assembled accessories.

Assembly the cutting attachment guard (Fig.1-2)

Important:

Always use the harness when working with the machine. Attach the strap as soon as you have started the engine and it is running in idle mode.

WARNING!

Please always switch off the engine before you take off the harness.

Cutting

During cutting, please don't keep the running speed just above clutch engagement speed. Any prolonged use at low speed is likely to cause premature wear of the clutch.

On the other hand, the user should not keep the engine speed in max speed after cutting. Any prolonged use at the highest speed is likely to reduce lifetime of engine.

Cut the grass from right to left.

Always take care to maintain a well balanced and secure position.

Wear the harness as illustrated in the figure. The blade turns anti-clockwise, so it is advised to use the unit from right to left to make an effective cut. Ensure the people present are at least 15 meters away.

CAUTION!

In an emergency, stop the engine by moving the engine switch to the stop position.

If the cutter accessory strikes stone or other debris, stop the engine and check whether something has been damaged and the cutter attachment is still secure.

If wet grass or branches remain in the cutter attachment, stop the engine and remove them.



Cutting attachments:

Attention! Use only original cutting devices or ones homologated by the Manufacturer



WARNING! In consideration that the selection, application and usage of the accessory to be fitted in the variety of possible usage are actions made solely by the user, the latter assumes responsibility for damages of any kind due to such actions. When in doubt or if lacking knowledge of the specificity of each accessory, contact specialised gardening centre.

5. Slowly pull the recoil starter until you feel it engage and then pull it quickly. Return the recoil starter gently and slowly to the original position by hand.

Note: when the engine is started for the very first time. It will require a number of attempts to start until the fuel has travelled from the tank to the motor.

6. Turn the choke lever to the run position as the engine started.
7. After starting the engine, press the throttle trigger to release the throttle trigger lockout. Let the engine run for 2 to 3 minutes so that it warms up before subjecting it to any load.

Under the following conditions the machine must be stop:

1. When the motor rotary speed changes
2. When sparks occur
3. When blade are damaged
4. In case of misfire
5. In case of high vibration
6. When flames or smoke appear
7. In rain or stormy weather

WARNING!

Check the cutting attachment always stops when the engine is idling.

Wear the harness



1. Wear the harness shown in (G1-G3).
2. Hook the machine to the carrying belt (G4).
3. Adjust the perfect working and cutting position by using the various strap adjusters on the carrying strap (G 5).
4. In order to set the optimum length of the carrying strap, the user should then make a test without starting the engine.

Important:

The carrying strap is fitted with a quick-release mechanism. Pull the red strap section (G 6) if you need to remove the strap quickly.

1. Loosen the 4 screws on the fixed supporter with the Allen key
2. Place the cutting attachment guard to the fixed supporter.
3. Assembly and tighten the screws.

WARNING!

Please check the blade and output shaft before each adjusting or assembly, it must be correctly assembled and running smoothly.

Fitting the blade (Fig. 1-3, 1-4)

1. Insert the allen key into the semicircular opening on the back side of blade to prevent turning of output shaft. (Fig. 1-3)
2. Fitting the blade on the output shaft and then assembly the flange, cap and nut. (1-6)
3. Fasten the nut by the socket spanner and turning it in clockwise direction (viewed from above).
4. Remove the allen key.

CAUTION!

When installing the blade cap, ensure that the concave side is properly assembled towards the blade.

Replace the blade (Fig.1-3, 1-4)

1. Insert the allen key into the semicircular opening on the back side of blade to prevent turning of output shaft. (Fig. 1-3)
2. Loose the nut with the socket spanner by turning it in anti-clockwise direction (viewed from above), then remove the cap, the retainer and the blade from the output shaft. (Fig.1-3, 1-4)
3. Refit the blade, aligning the centre of the blade.
4. Assembly the front flange and the cap, and then tighten the nut.
5. Remove the allen key.

WARNING!

Never use non-recommended cutting attachments and appropriate guards and their location. The non approved cutting attachments may cause serous injure during working.

Fitting the edge trimmer head (Fig. 1-3, 1-4, 1-5)

1. Insert the allen key into the semicircular opening on the back side of blade/ spool to prevent turning of output shaft. (Fig. 1-3)
2. Loose the nut with the socket spanner by turning it in anti-clockwise direction (viewed from above), then remove the cap, the flange and the blade from the output shaft (if applicable). (Fig.1-3, 1-4)
3. Screw the edge trimmer head onto the thread of output shaft by turning it in clockwise direction (viewed from above) (Fig. 1-5)
4. Remove the allen key.

Replace the edge trimmer head (Fig.1-3, 1-5)

1. Insert the allen key into the semicircular opening on the back side of blade/ spool to prevent turning of output shaft. (Fig. 1-3)
2. Loose the edge trimmer head by turning it in anti-clockwise direction (viewed from above). (Fig.1-3, 1-4)
3. Screw the new edge trimmer head onto the thread of output shaft by turning it in clockwise direction (viewed from above) (Fig. 1-5)
4. Remove the allen key.

WARNING!

Never use non-recommended cutting attachments and appropriate guards and their location. The non approved cutting attachments may cause serous injure during working.

OPERATION

Before use

Please always read the instruction manual carefully and check the machine before operating.

WARNING!

The brush cutter is fitted with a two-stroke engine, so no need fill oil separately. Fill the oil mixed with fuel, please consult below section .

Check the cutting attachment, never use blades that are dull, cracked or damaged.

Make sure the handle and safety features are in good working order. Never use a machine that lacks a part or has been modified outside its specifications.

The enclosures must be correctly fitted and undamaged before you start the machine.

WARNING!

Please always use quality gloves, foot, ear and eye protector. They should with CE mark and tested according to PPE (Person Protective Equipment) directive.

The poor equipments may reduce the protection and result in person injure during working.

Engine fuel

WARNING!

The brush cutter is fitted with a two-stroke engine; use fuel mixed with oil only.

Only fuel the machine in well-lit areas. Avoid fuel spillage. Never refuel the machine during operation. Let the engine cool down for about two minutes before refueling.

Refueling must not be carried out near naked flames, control lamps or spark producing electrical equipment such as electric tools, welders or sanders.

1. Make sure the machine is turned off, by turn the engine switch to the "off" position.
2. Check the fuel by a visual check , remove the fuel cap and reviewing the fuel level.
3. Full unleaded fuel mixed with oil from an approved fuel container into the fuel tank, because of fuel expands, please fill the tank to the neck of tank only.
4. Turn the fuel cap clockwise to assembly it in position.

WARNING.

- Do not refill fuel while engine is running or hot.
- Make sure fuel is not leaking.

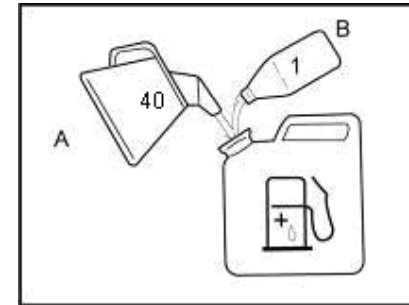
Use quality two-stroke oil and make a mixture of 40 parts petrol to one part oil only (**2,5% oil mixed in fuel**).

Never use two-stroke oil intended for water-cooled engines.

Never use oil intended for four-stroke engines.

A poor oil quality and/or too high oil/fuel ratio may jeopardise function and decrease the life time of catalytic converters.

Shake the container well to obtain a correct mixture before filling the tank.



Use at least 90 octane fuel. We recommend unleaded petrol as it leaves fewer residues inside the motor and on the ignition plug, and prolongs the life cycle of the exhaust system. Never use old or dirty petrol or oil/petrol mixtures. Avoid contamination with dirt or water in the tank. Occasionally ignition knocking or clanging can be heard with high loads. This is normal and no cause for alarm. If ignition knocking or clanging occurs during normal loads and with constant motor speed you should change the petrol quality. If this does not solve the problem contact an authorized specialist dealer.

When working at continuous high revs a higher octane rating is recommended.

Check the air cleaner

Check the air filter to be sure it is clean and in good condition.

Loosen the air cleaner cover screw, and remove the air cleaner cover, then check the main air filter. Clean or replace the air filter if necessary.

Starting the engine

WARNING!

The cutting attachment may start to move when the engine is started. Make sure the attachment can not come into contact with any object.

Make sure that no unauthorised persons are in the working area, otherwise there is a risk of serious personal injury.

1. Press the intake pump several times until fuel begins to fill the bulb.
2. Turn the engine switch to the "ON" position.
3. To start a cold engine, move the choke lever to the **START** position. In order to restart a warm engine, leave the choke lever in the run position.



Close the choke: Start position

Position: air filter cover

4. To start the engine, the throttle trigger should be locked in idling position. To do so, follow the steps below:
 - Press the throttle trigger lockout (9).
 - Maintaining the throttle trigger lockout engaged, press the throttle trigger (7).
 - By keeping the two commands (9) and (7) engages, pushed the throttle lock (10).
 - The throttle lock (10) should remain stacked in the down position.
 - Then release the throttle trigger lockout and throttle trigger, the throttle is stuck on startup position.